

# PRODUCT CATALOGUE

## AFTERMARKET

SPARE PARTS FOR JOHN DEERE®  
SUGARCANE HARVESTERS  
CH950 CH960



26/09/2024



## **WHY USE UNIMIL PARTS?**

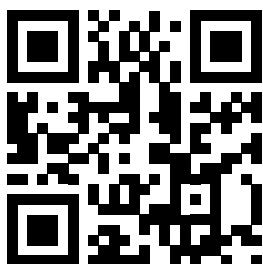
Unimil is a reference in the market of spare parts for sugarcane harvesters.

Our mission is to offer our customers greater availability of the harvester in operation with the lowest cost per ton of cane harvested, through innovative, high-quality products and specialised technical support.

Our team daily study opportunities in the field to maximise the performance of our parts and ensure the best performance in your machine.

We are present in more than 20 countries and in Brazil with 8 branches in the main sugar-energy centres to serve with agility and efficiency, after all, agro doesn't stop.

**Get to know  
Unimil solutions  
and boost the  
operation of your  
harvester!**



[unimil.com.br](http://unimil.com.br)

**TOPPER SYSTEM**

STRUCTURE 7  
 DISC 7  
 DISC 7

**CROP DIVIDER**

EXTERNAL (RH) 9  
 INTERNAL (RH) 9  
 CENTRAL (RH) 9  
 CENTRAL (LH) 9  
 INTERNAL(LH) 9  
 EXTERNAL (LH) 9  
 ENDLESS SUPPORT 10  
 ARTICULATION SUPPORT W/FLOAT 12  
 BUSHING 12  
 LINKAGE - (LH, RH AND CENTRAL) 13  
 SMALLER BUSHING 13  
 PIN - LINKAGE 14  
 CROP DIVIDER PIN (CENTRAL) 14  
 CROP DIVIDER PIN (CENTRAL) 15  
 CROP DIVIDER PIN (LH AND RH) 15  
 PIN - ARTICULATION SUPPORT LATERAL CUT 16  
 CROP DIVIDER PIN 17  
 SHAFT - INTERNAL ENDLESS 18  
 CROP DIVIDER SHOW TOE 19  
 TUBE (LH AND RH) 19  
 FLANGED BEARING 20  
 BOTTOM FLANGE - ENDLESS HOUSING 20  
 HOUSING PLATE 20  
 BALL BEARING - TRIPLE SEAL 21  
 JOINT - ENDLESS HOUSING 21  
 STABILIZER VALVE ROD 22  
 CROP DIVIDER 22

**BASE CUTTER**

BASE CUTTER LEG 24  
 SLAT 24  
 GEAR 25  
 DEFLECTOR 26  
 SIDE PROTECTION KIT 27  
 RUBBER SIDE PROTECTION 27  
 PROTECTION + RUBBER 27  
 DEFLECTOR - BASE CUTTER STRUCTURE 28

**ROLLERS**

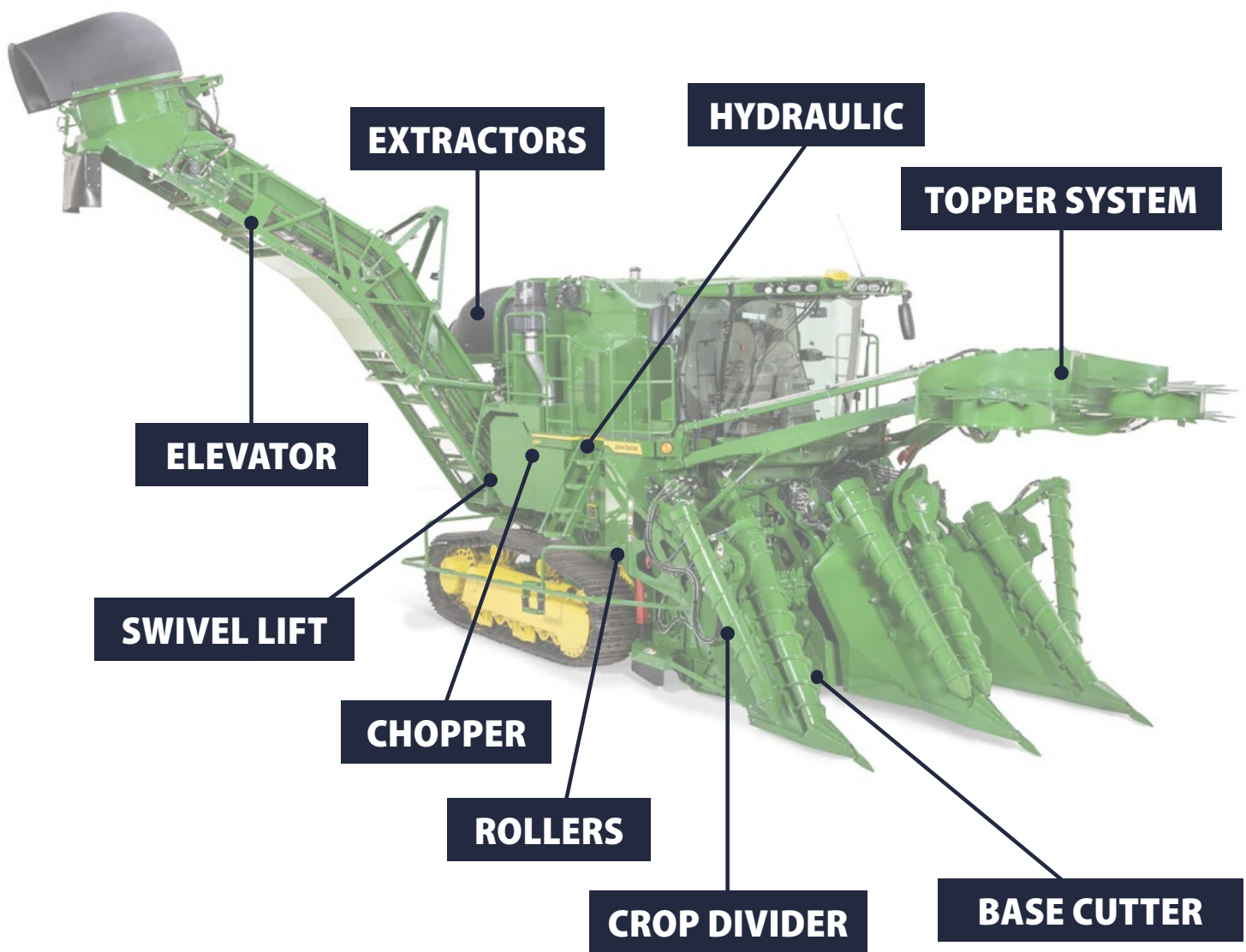
INTERNAL COUPLING - REINFORCED 32  
 EXTERNAL HUB (REINFORCED) 32

INTERNAL HUB 33  
 EXTERNAL HUB 33  
 SACKER - INTERNAL COUPLING (PINION) 34  
 SPECIAL BEARING - ROTATING HOUSING 35  
 BEARING HOUSING SEALED W/ SKF BEARING 36  
 SEALED BEARING HOUSING KIT 36  
 HOUSING - TREATED 37  
 PROTECTION PLATE - HUB 38  
 SPACER FLANGE - HOUSING 38  
 FORGED SHAFT 39  
 FLAT ROLLER 39  
 PLATE 40  
 ROLLER CAP END PLATE 40  
 TRANSPORTER ROLLER 41  
 ROLLER ARM 44  
 PRE-TIPPER ROLLER 45  
 PIN - ARM (CRADLE) 45  
 RING 46  
 ROLLER WEAR PLATE 46  
 ARM PIN 47

**CHOPPER**

CHOPPER GEARBOX - COMPLETE 49  
 CHOPPER GEARBOX - IMPROVEMENTS 50  
 CHOPPER GEARBOX - EXPLODED VIEW 52  
 CHOPPER GEARBOX - PARTS LIST 53  
 CHOPPER GEARBOX - VERSIONS 54  
 FRONT HOUSING 54  
 SPECIAL WASHER 55  
 CONVENTIONAL WASHER 55  
 SPECIAL HEX NUT 56  
 GUIDE BUSH 57  
 NEW LOCK PIN WITH BACKREST 57  
 LEVER 57  
 FLANGE 58  
 BUSHING HOUSING HUB 58  
 NEW FLANGE 58  
 NEW HOUSING 59  
 GEAR DRIVE KIT 59  
 INSPECTION COVER 59  
 GEAR 75Z 60  
 PINION SHAFT 60  
 PROTECCION RING (LOWER) 61  
 PROTECCION RING (HIGHER) 61  
 FORGED CHOPPER CUBE 61  
 FLYWHEEL 62  
 BRONZE BUSHING 62

STAINLESS PLATE	62	ELEVATOR PROTECTION	92
CHOPPER ROLLER (05 KNIVES)	63	SLAT - 03 BEND	93
CHOPPER ROLLER FRAME PLATE PROTECTION	64	CHAIN LINK	93
CHOPPER CLAMP KIT	65	STRETCHER	94
CHESTNUT	66	ELEVATOR SUPPORT	95
		SUPPORT	95
		ELEVATOR SPROCKET	96
<b>EXTRACTORS</b>			
MOUNTING PARTS	68	SPROCKET SUPPORT	97
SHEET	68	SHAFT - GEAR	97
MODULATED METALLIC HOOD	69	SHAFT SUPPORT	97
PRIMARY HOOD 22 MM	70	BOTTOM SHAFT	98
PRIMARY HOOD 12,70 MM	71	SPACER	98
COATING HOOD	71		
SECONDARY HOOD	72	<b>SWIVEL LIFT</b>	
SUPPORT - REINFORCED SQUARE TUBE	72	CENTER SHAVE	100
MODULAR SUPPORT	73	ELEVATOR STRUCTURE	101
FLAP	75	JOINT BRACKET	101
BAR	75	CABLE STEEL SWIVEL - SAFETY	102
FLAP PAD	75	SWING TABLE CENTRAL BUSHING	102
BEARING - PRIMARY EXT	76	HOUSING	103
HOUSING	77	FIX PLATE	103
ARM	77	WEAR PLATE	104
SECONDARY EXT RING	78	CENTRAL PIN SWIVEL TABLE	104
RAW WELDMENT	78	BOTTOM PIN - TABLE SWIVEL	105
DEFLECTOR	79	SWING TABLE PIN	105
GEAR	79	PIN PIVOTING PULLEY	106
SWINGED CARVED GEAR	80		
RING COATING	80	<b>HYDRAULIC</b>	
PRIMARY EXT FAN BLADE	81	HYDRAULIC ACCUMULATOR 1L	108
PRIMARY EXTRACTOR FAN	82		
SECONDARY EXT BLADE	82	<b>VARIOUS</b>	
WEAR PLATE	83	VARIOUS	110
SEAL PLATE	83		
VENETIAN + SPECIAL UNIMIL SUPPORT	84		
DEFLECTOR	85		
SECONDARY EXTRACTOR HIGH RING	85		
DEFLECTOR SUPPORT	86		
ROD	86		
FLANGE	87		
TUBE	87		
SUPERIOR HUB	87		
MOTOR PROTECCION	88		
<b>ELEVATOR</b>			
PERFORATED FLOOR - CONVENTIONAL	90		
SINUOUS FLOOR- HIGH PERFORMANCE	91		
PLATE J	92		
<b>PERFORATED FLOOR - HARDOX</b>	<b>91A</b>		



# TOPPER SYSTEM

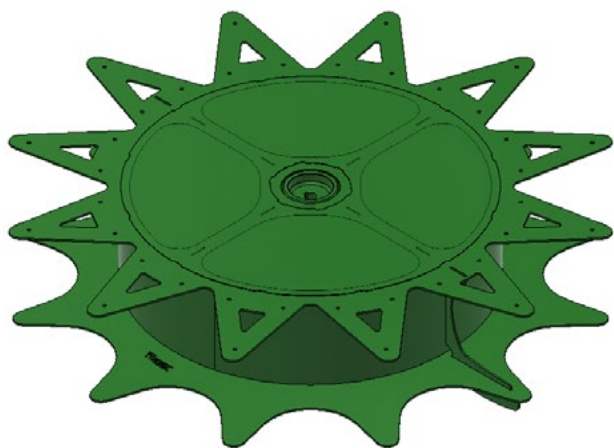


## STRUCTURE

**UNIMIL® PN** 047690

**JOHN DEERE® PN** AXT18707, AXT20808

APPLICATION: CH950 CH960

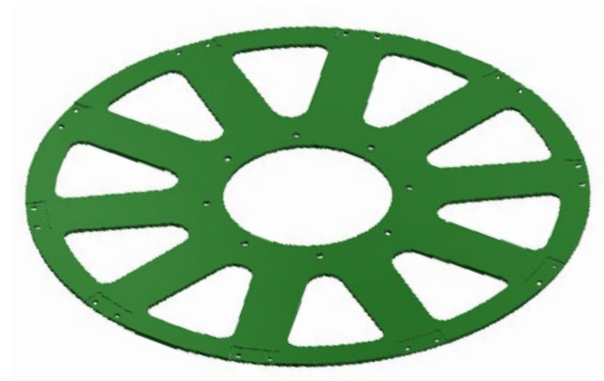


## DISC

**UNIMIL® PN** 057296

**JOHN DEERE® PN** AXT21894

APPLICATION: CH950 CH960



## DISC

**UNIMIL® PN** 046953

**JOHN DEERE® PN** CXT31689

APPLICATION: CH950 CH960

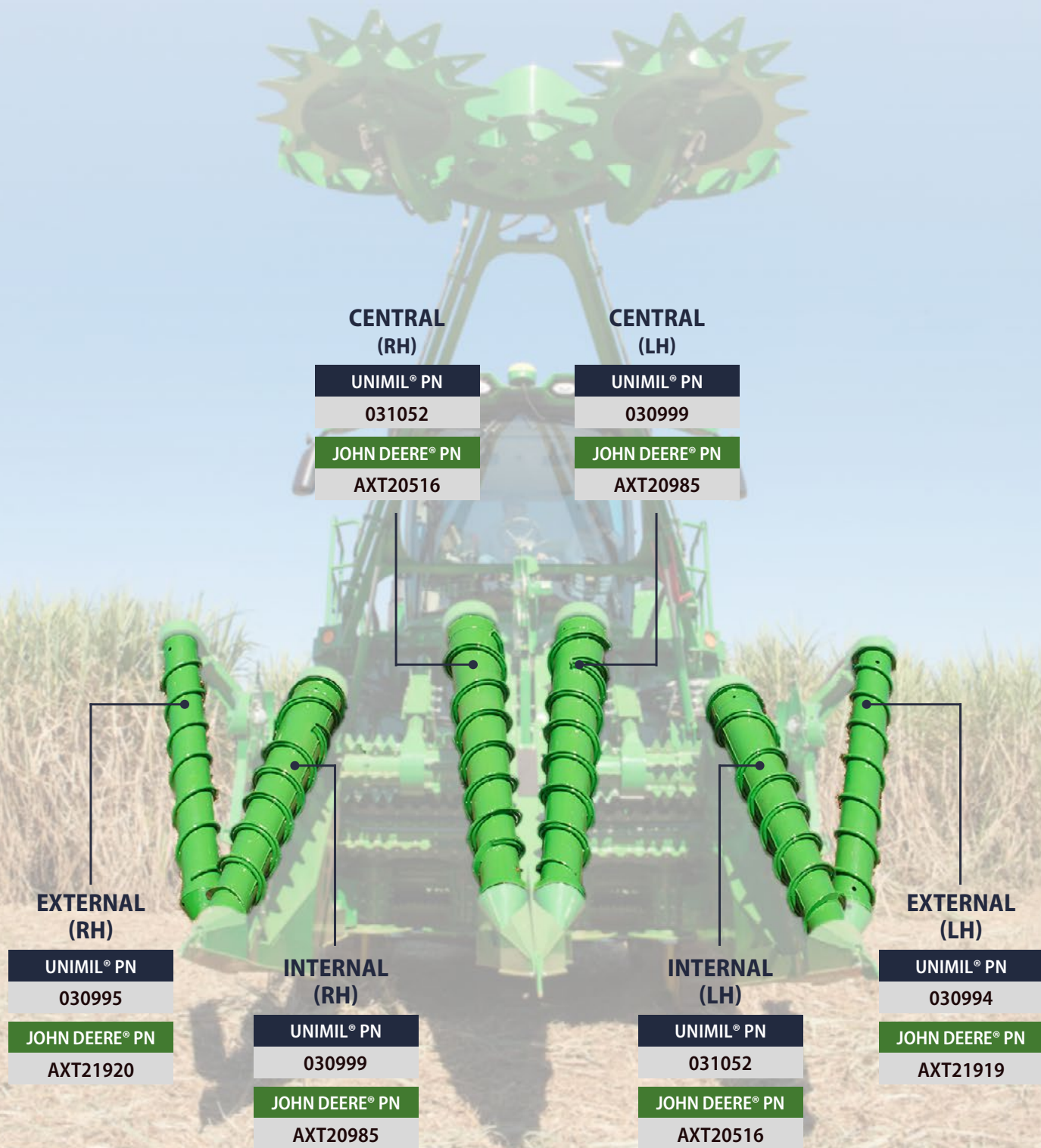
# CROP DIVIDER



# ENDLESS

APPLICATION: CH950 CH960

- Wear coating on the first 3 lower spirals



# ENDLESS SUPPORT

APPLICATION: CH950 CH960

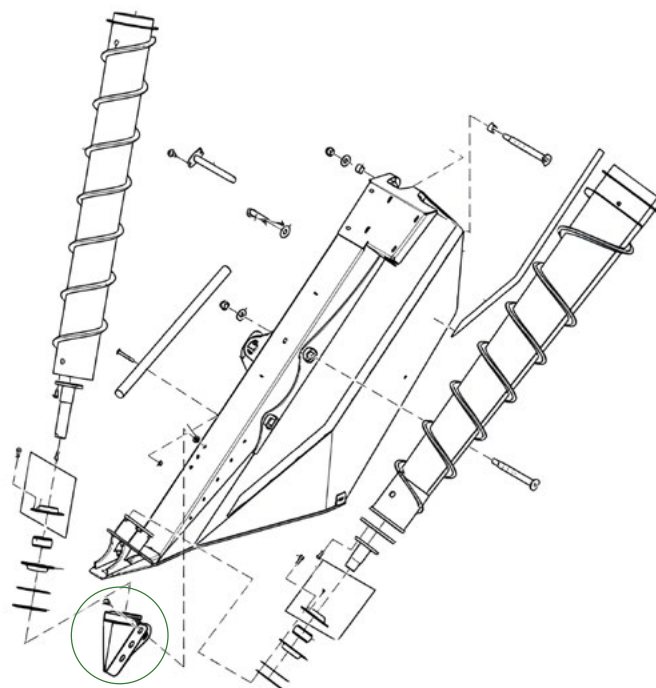


## BOTTOM SUPPORT (RH)

<b>UNIMIL® PN</b>	<b>057439</b>
<b>JOHN DEERE® PN</b>	<b>AXT21011</b>

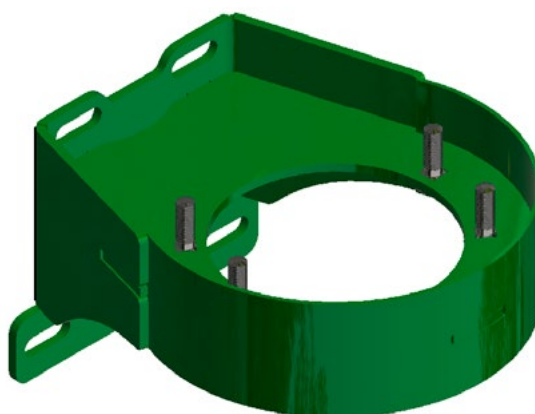
## BOTTOM SUPPORT (LH)

<b>UNIMIL® PN</b>	<b>057440</b>
<b>JOHN DEERE® PN</b>	<b>AXT20972</b>



# ENDLESS SUPPORT

APPLICATION: CH950 CH960



**EXTERNAL SUPPORT (RH)**

<b>UNIMIL® PN</b>	<b>048102</b>
<b>JOHN DEERE® PN</b>	<b>AXT14794</b>

**INTERNAL SUPPORT (RH)**

<b>UNIMIL® PN</b>	<b>048101</b>
<b>JOHN DEERE® PN</b>	<b>AXT16521</b>

**EXTERNAL SUPPORT (LH)**

<b>UNIMIL® PN</b>	<b>048102</b>
<b>JOHN DEERE® PN</b>	<b>AXT14794</b>

**INTERNAL SUPPORT (LH)**

<b>UNIMIL® PN</b>	<b>048104</b>
<b>JOHN DEERE® PN</b>	<b>AXT16522</b>

**CENTRAL (RH)**

<b>UNIMIL® PN</b>	<b>048101</b>
<b>JOHN DEERE® PN</b>	<b>AXT16521</b>

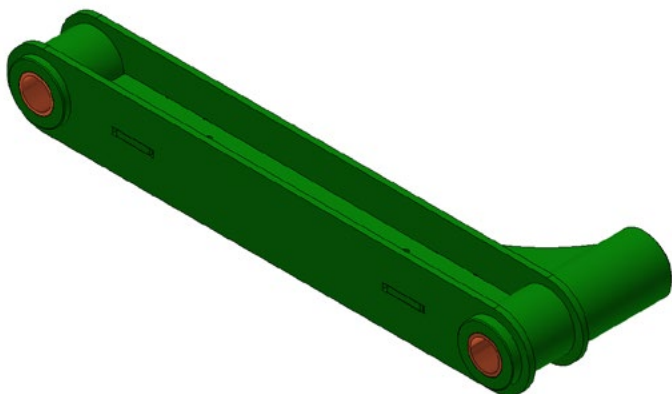
**CENTRAL (LH)**

<b>UNIMIL® PN</b>	<b>048104</b>
<b>JOHN DEERE® PN</b>	<b>AXT16522</b>

## ARTICULATION SUPPORT W/FLOAT

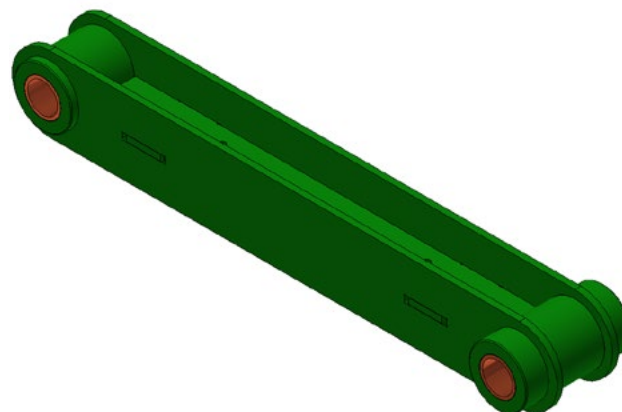
APPLICATION: CH950 CH960

- Bushings are included



### EXTERNAL SUPPORT

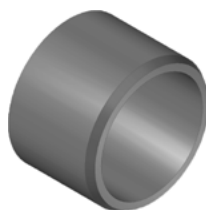
UNIMIL® PN	047347
JOHN DEERE® PN	AXT17115



### INTERNAL SUPPORT

UNIMIL® PN	047348
JOHN DEERE® PN	AXT17116

## BUSHING



UNIMIL® PN	003188
JOHN DEERE® PN	0110038334

- Heat treatment

UNIMIL HAS A COMPLETE LINE OF GROOVED BUSHINGS  
CONSULT THE CATALOGUE VIA QR CODE OR CLICK HERE



## LINKAGE - (LH, RH AND CENTRAL)



UNIMIL® PN	047351
JOHN DEERE® PN	AXT18993

APPLICATION: CH950 CH960

- Bushings are included

### BUSHING

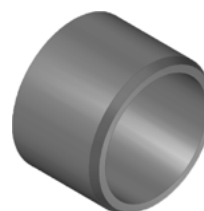


UNIMIL® PN	046960
JOHN DEERE® PN	CXT31406

APPLICATION: CH950 CH960

- Heat treatment

### SMALLER BUSHING



UNIMIL® PN	003188
JOHN DEERE® PN	0110038334

APPLICATION: CH950 CH960

- Heat treatment

UNIMIL HAS A COMPLETE LINE OF GROOVED BUSHINGS  
CONSULT THE CATALOGUE VIA QR CODE OR CLICK HERE



## PIN - LINKAGE

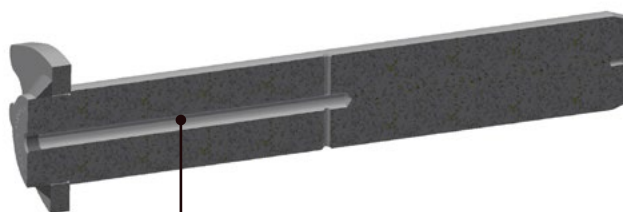


UNIMIL® PN	046669
------------	--------

JOHN DEERE® PN	AXT19024, AXT20605
----------------	--------------------

APPLICATION: CH950 CH960

- Heat treatment
- Channel of lubrication



**CHANNEL OF LUBRICATION**

## CROP DIVIDER PIN (CENTRAL)

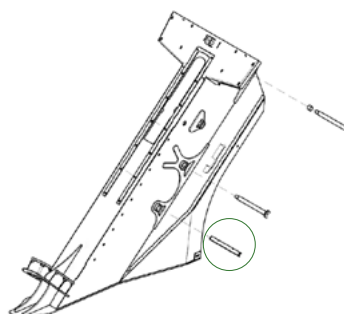


UNIMIL® PN	046671
------------	--------

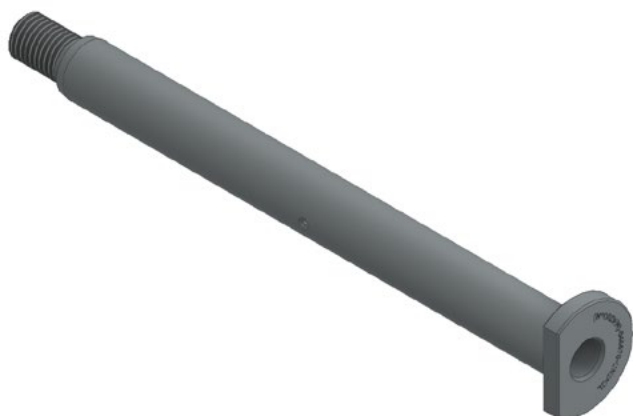
JOHN DEERE® PN	CXT25978
----------------	----------

APPLICATION: CH950 CH960

- Heat treatment



## CROP DIVIDER PIN (CENTRAL)

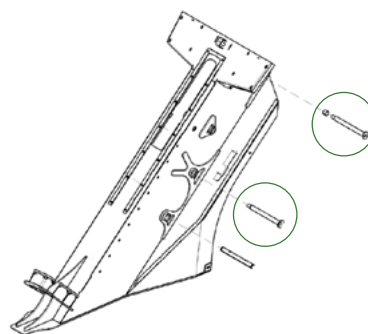


UNIMIL® PN	046670
------------	--------

JOHN DEERE® PN	CXT25977
----------------	----------

APPLICATION: CH950 CH960

- Heat treatment



## CROP DIVIDER PIN (LH AND RH)

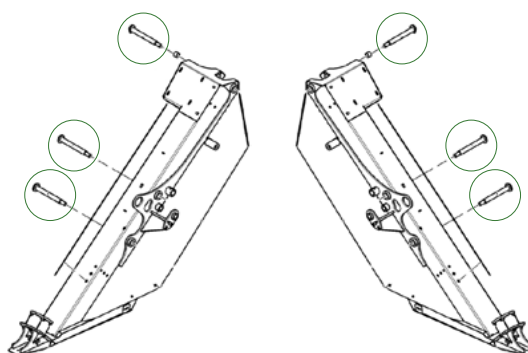


UNIMIL® PN	046663
------------	--------

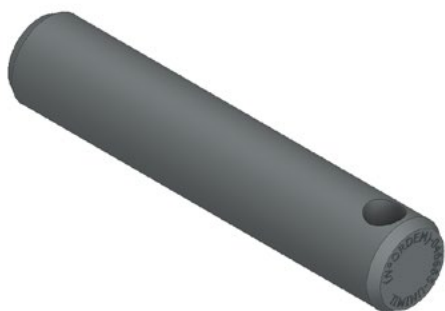
JOHN DEERE® PN	CXT25772
----------------	----------

APPLICATION: CH950 CH960

- Heat treatment



## PIN - ARTICULATION SUPPORT LATERAL CUT

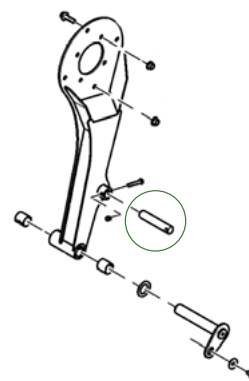


UNIMIL® PN	046665
------------	--------

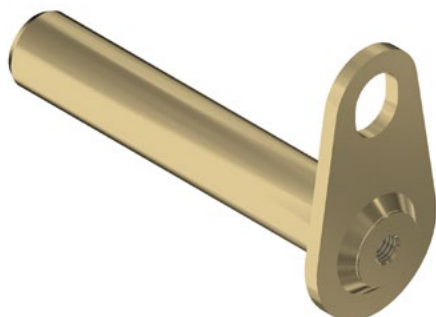
JOHN DEERE® PN	CXT27701
----------------	----------

APPLICATION: CH950 CH960

- Heat treatment



## BOTTOM PIN - ARTICULATION SUPPORT LATERAL CUT

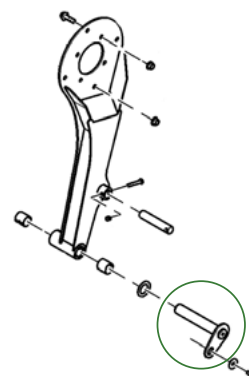


UNIMIL® PN	030984
------------	--------

JOHN DEERE® PN	AXT20449, AXT11371, AXT15413
----------------	------------------------------

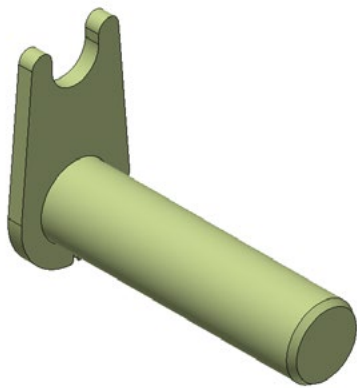
APPLICATION: CH570 CH670 CH950 CH960

- Heat treatment





## CROP DIVIDER PIN



UNIMIL® PN

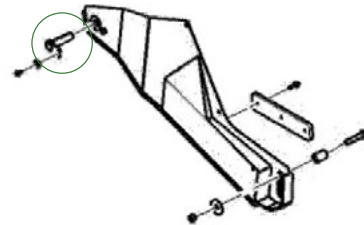
046662

JOHN DEERE® PN

AXT17142

APPLICATION: CH950 CH960

- Heat treatment



## CROP DIVIDER PIN



UNIMIL® PN

046668

JOHN DEERE® PN

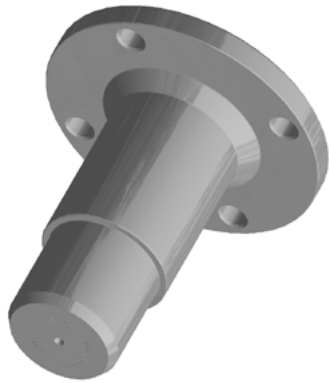
AXT19042

APPLICATION: CH950 CH960

- Heat treatment



## SHAFT - INTERNAL ENDLESS



UNIMIL® PN	046667
------------	--------

JOHN DEERE® PN	AXT18738
----------------	----------

APPLICATION: CH950 CH960



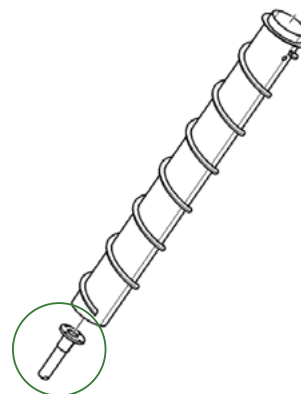
## SHAFT - EXTERNAL ENDLESS



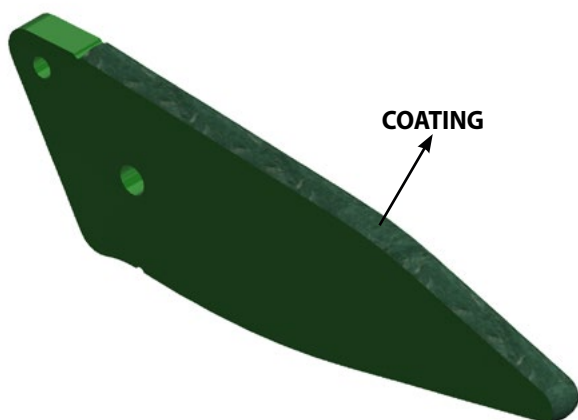
UNIMIL® PN	046666
------------	--------

JOHN DEERE® PN	AXT18925
----------------	----------

APPLICATION: CH950 CH960



## CROP DIVIDER SHOW TOE



UNIMIL <sup>®</sup> PN	046966
------------------------	--------

JOHN DEERE <sup>®</sup> PN	CXT30001
----------------------------	----------

APPLICATION: CH950 CH960

- Tip with wear coating
- Minimizes excessive screw breakage during operation

## TUBE (LH AND RH)

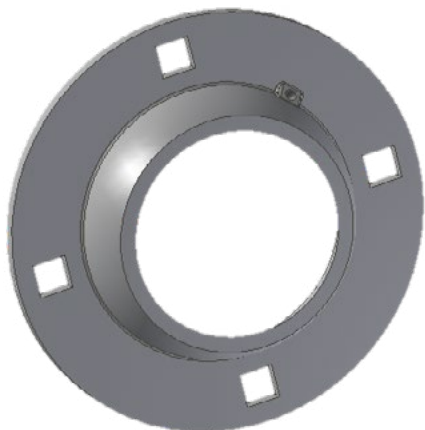


UNIMIL <sup>®</sup> PN	046664
------------------------	--------

JOHN DEERE <sup>®</sup> PN	AXT15060
----------------------------	----------

APPLICATION: CH950 CH960

## FLANGED BEARING

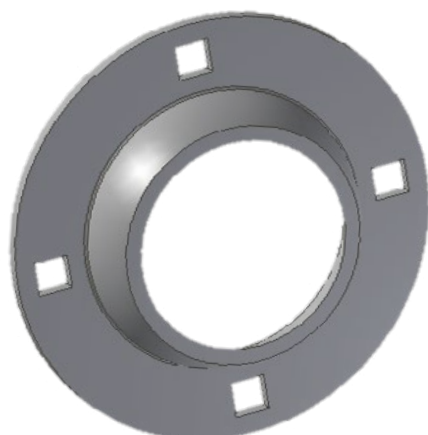


UNIMIL® PN	048537
------------	--------

JOHN DEERE® PN	AA29784
----------------	---------

APPLICATION: CH950 CH960

## BOTTOM FLANGE - ENDLESS HOUSING

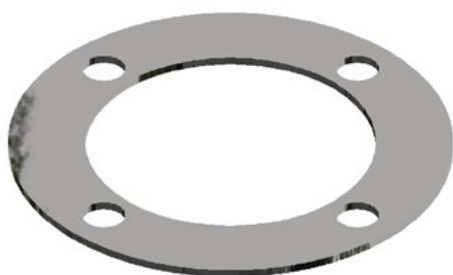


UNIMIL® PN	048536
------------	--------

JOHN DEERE® PN	A39169
----------------	--------

APPLICATION: CH950 CH960

## HOUSING PLATE



UNIMIL® PN	046961
------------	--------

JOHN DEERE® PN	CXT30749
----------------	----------

APPLICATION: CH950 CH960

## BALL BEARING - TRIPLE SEAL



UNIMIL® PN

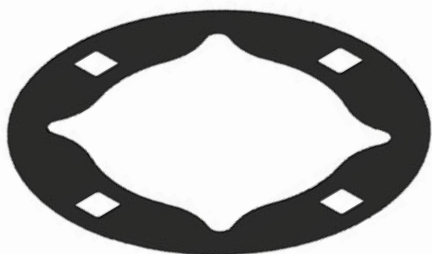
057621

JOHN DEERE® PN

AKK22197

APPLICATION: CH950 CH960

## JOINT - ENDLESS HOUSING



UNIMIL® PN

046964

JOHN DEERE® PN

A36772

APPLICATION: CH950 CH960

## STABILIZER VALVE ROD



UNIMIL <sup>®</sup> PN	011510
------------------------	--------

JOHN DEERE <sup>®</sup> PN	N380649
----------------------------	---------

APPLICATION: CH3520 CH3522 CH570 CH670 CH950 CH960

## CROP DIVIDER

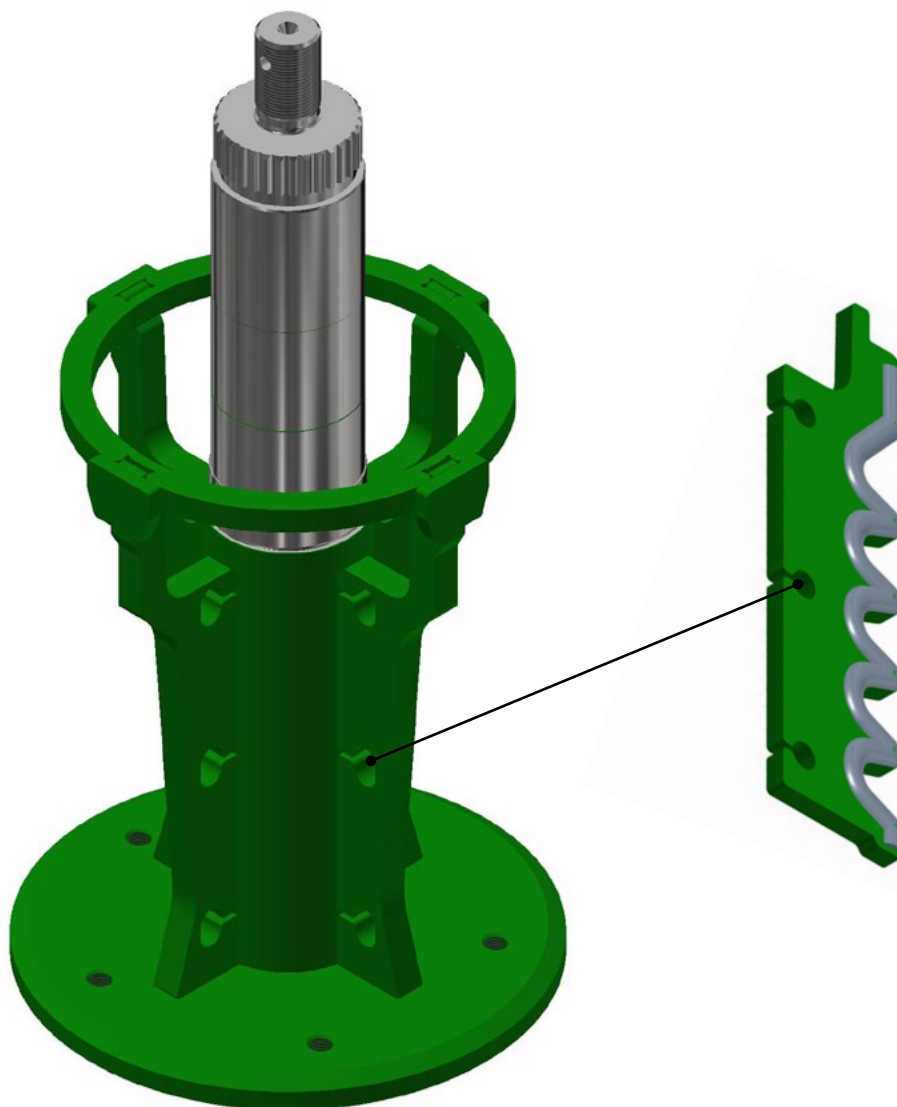


UNIMIL <sup>®</sup> PN	048227
------------------------	--------

JOHN DEERE <sup>®</sup> PN	AXT18203
----------------------------	----------

APPLICATION: CH950 CH960

# BASE CUTTER



### BASE CUTTER LEG

UNIMIL® PN	056285
JOHN DEERE® PN	AXT18221

APPLICATION: CH570 CH670 CH950 CH960

- Removable talisca for replacement

### SLAT

UNIMIL® PN	048110
JOHN DEERE® PN	CXT29825

APPLICATION: CH950 CH960

- Coating against wear in the attack area



## GEAR

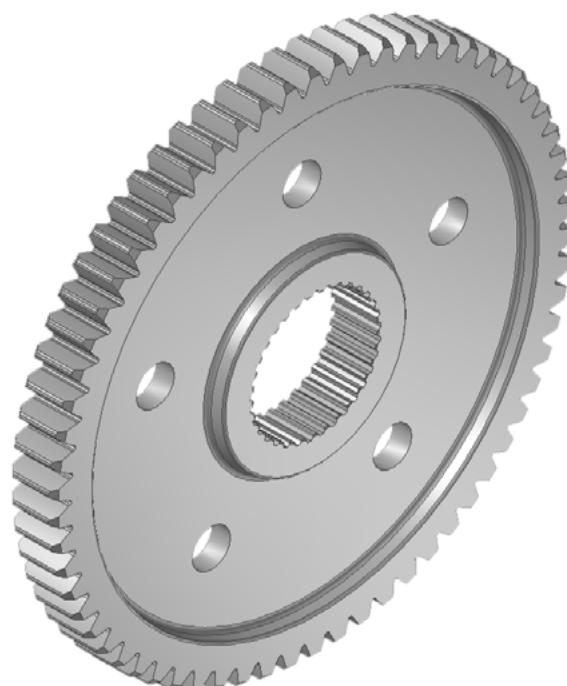
APPLICATION: CH3510 CH3520 CH3522 CH570 CH670 CH950 CH960

- Forged material of high strength and better hardenability
- High dimensional control of teeth



### 42Z

UNIMIL® PN	010676
JOHN DEERE® PN	CB01418408



### 66Z

UNIMIL® PN	029340
JOHN DEERE® PN	CB01418406



### 19Z

UNIMIL® PN	012203
JOHN DEERE® PN	CB01437885

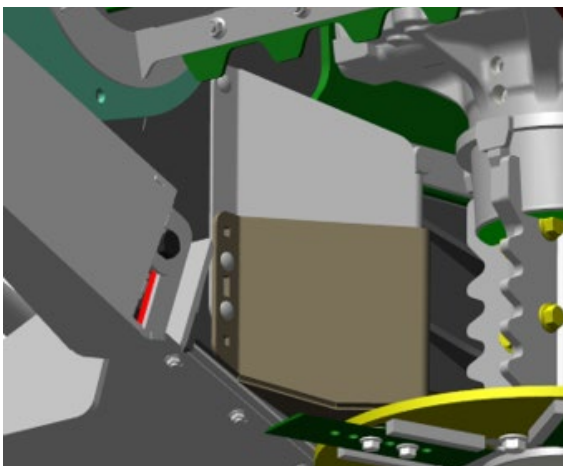
## DEFLECTOR

APPLICATION: CH950 CH960

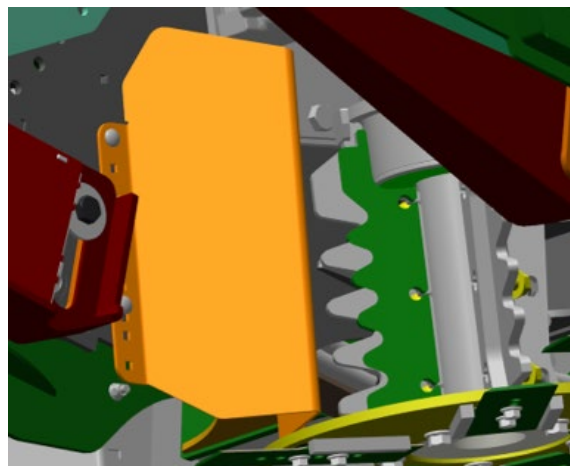
- Possibility of installing more aggressive taliscas for cases of high productivity cane that presents feeding difficulty



BEFORE APPLICATION OF DEFLECTOR + WEAR PLATE



AFTER APPLICATION OF DEFLECTOR + WEAR PLATE



## SIDE PROTECTION KIT

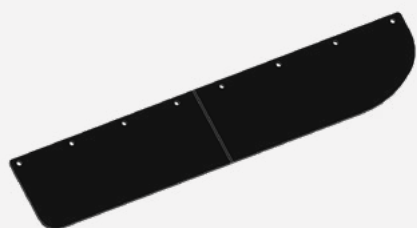
APPLICATION: CH950 CH960

- Better protection against materials that could be cast out of the BASE CUTTER box



### PROTECTION + RUBBER

UNIMIL® PN	059929
------------	--------



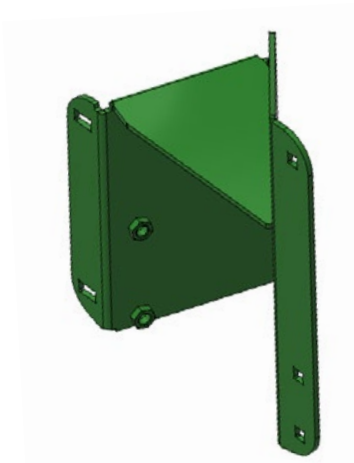
### RUBBER SIDE PROTECTION

UNIMIL® PN	059982
JOHN DEERE® PN	CXT35679

High mechanical and wear resistance special rubber canvas

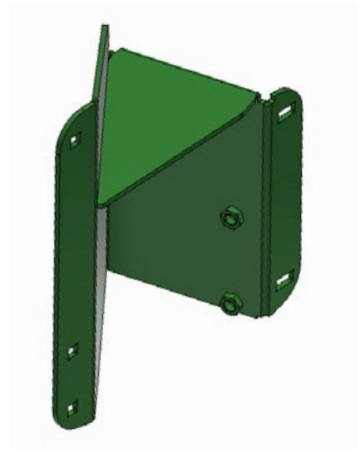
## DEFLECTOR - BASE CUTTER STRUCTURE

APPLICATION: CH950 CH960



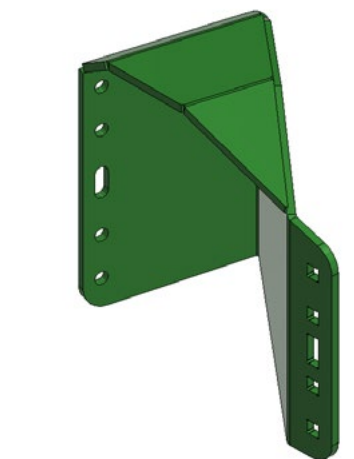
**UPPER DEFLECTOR (LH)**

UNIMIL® PN	047973
JOHN DEERE® PN	AXT18272



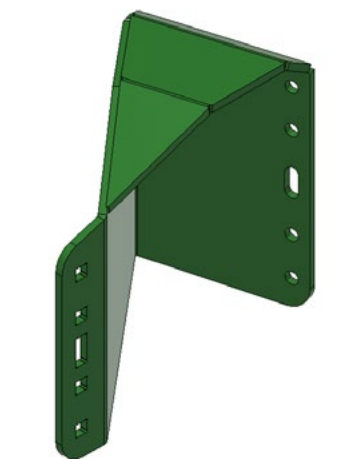
**UPPER DEFLECTOR (RH)**

UNIMIL® PN	047865
JOHN DEERE® PN	AXT18271



**BOTTOM DEFLECTOR (LH)**

UNIMIL® PN	048042
JOHN DEERE® PN	AXT18428

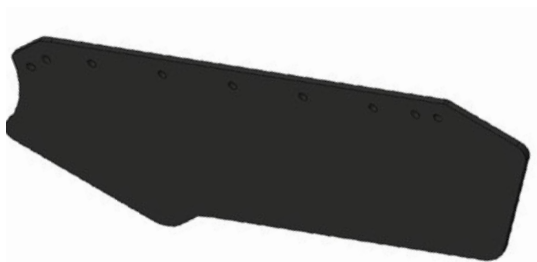


**BOTTOM DEFLECTOR (RH)**

UNIMIL® PN	047974
JOHN DEERE® PN	AXT18427

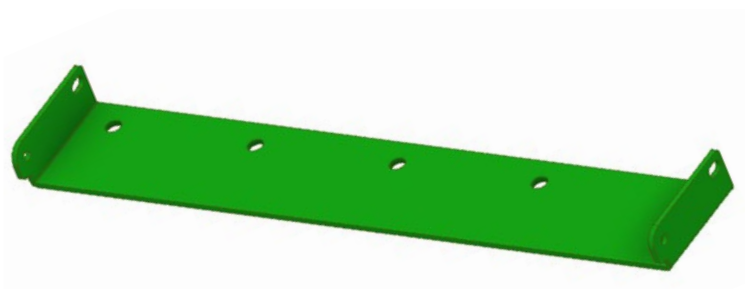
## SUPPORTS AND PROTECTIONS - BASE CUTTER STRUCTURE

APPLICATION: CH950 CH960



### PROTECCION

UNIMIL® PN	051892
JOHN DEERE® PN	CXT33014



### SUPPORT

UNIMIL® PN	051888
JOHN DEERE® PN	CXT33009



### PLATE

UNIMIL® PN	048232
JOHN DEERE® PN	CXT20579



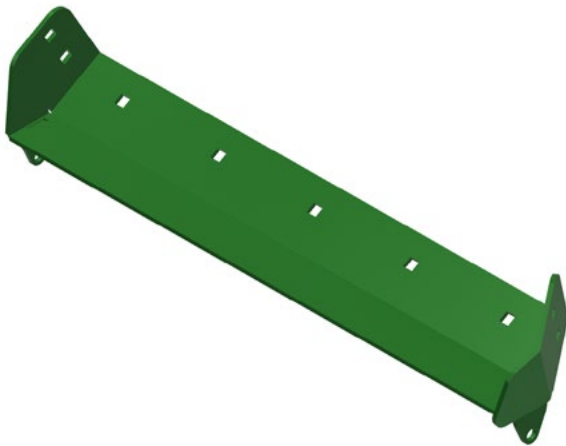
### FIX PLATE

UNIMIL® PN	051891
JOHN DEERE® PN	CXT33015

## SUPPORTS AND PROTECTIONS - BASE CUTTER STRUCTURE

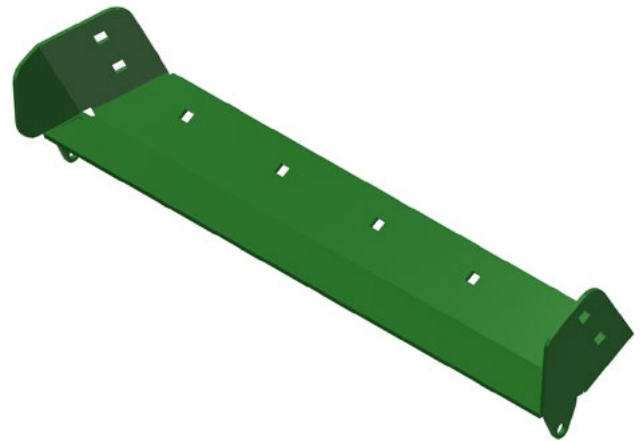
APPLICATION: CH950 CH960

- Protection cylinder - Stacking blade



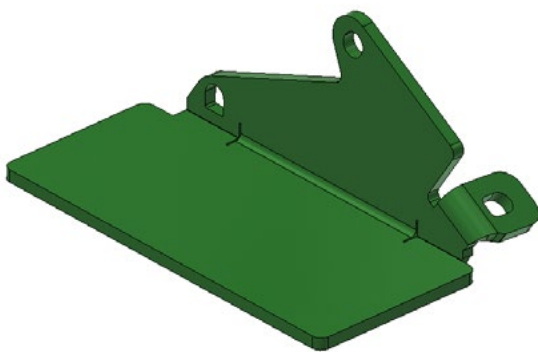
**SUPPORT (LH)**

UNIMIL® PN	051890
JOHN DEERE® PN	AXT19833



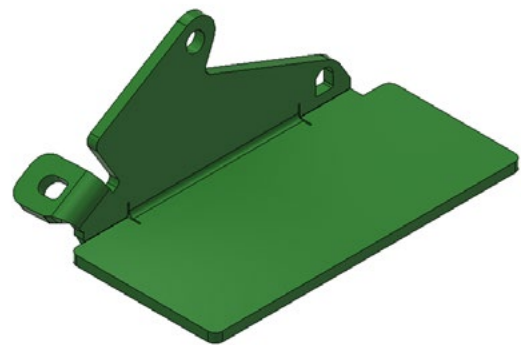
**SUPPORT (LH)**

UNIMIL® PN	051996
JOHN DEERE® PN	AXT19832



**SIDE SUPPORT (LH)**

UNIMIL® PN	051889
JOHN DEERE® PN	CXT33017



**SIDE SUPPORT (RH)**

UNIMIL® PN	051997
JOHN DEERE® PN	CXT33016

# ROLLERS

## INTERNAL COUPLING - REINFORCED



UNIMIL® PN	037990
------------	--------

JOHN DEERE® PN	AXT20395, CXT30210
----------------	--------------------

APPLICATION: CH3510 CH3520 CH3522 CH570 CH670 CH950 CH960

- Heat treatment
- High strength steel
- Teeth reinforced and domed
- Performance 2x higher than the competition
- Preserves the integrity of the hydraulic motor

## EXTERNAL HUB (REINFORCED)



UNIMIL® PN	018307
------------	--------

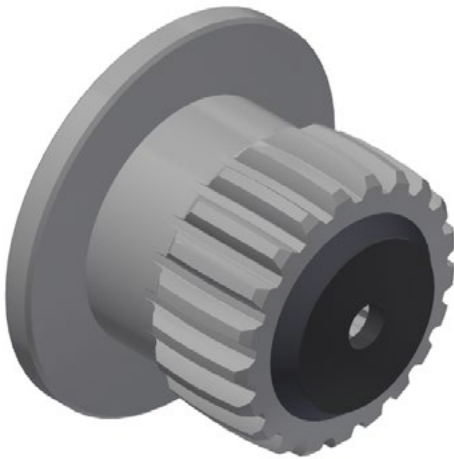
JOHN DEERE® PN	0300048144, CXT13073
----------------	----------------------

APPLICATION: CH3510 CH3520 CH3522 CH570 CH670 CH950 CH960

- Heat treatment
- High strength steel
- Reinforced
- 2x more quality than the competitor
- Preserves hydraulic motor integrity



## INTERNAL HUB



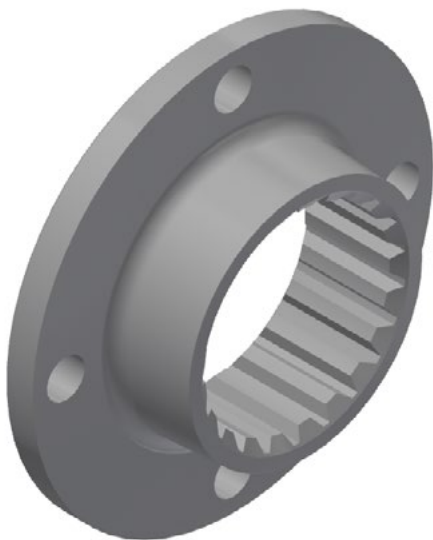
UNIMIL® PN	052367
------------	--------

JOHN DEERE® PN	AXT20395, CXT30210
----------------	--------------------

APPLICATION: CH950 CH960

- Heat treatment
- High strength steel
- Preserves the integrity of the hydraulic motor

## EXTERNAL HUB



UNIMIL® PN	019552
------------	--------

JOHN DEERE® PN	0300048144, CXT13073
----------------	----------------------

APPLICATION: CH3510 CH3520 CH3522 CH570 CH670 CH950 CH960

- Heat treatment
- High strength steel
- Preserves the integrity of the hydraulic motor

## SACKER - INTERNAL COUPLING (PINION)

UNIMIL® PN

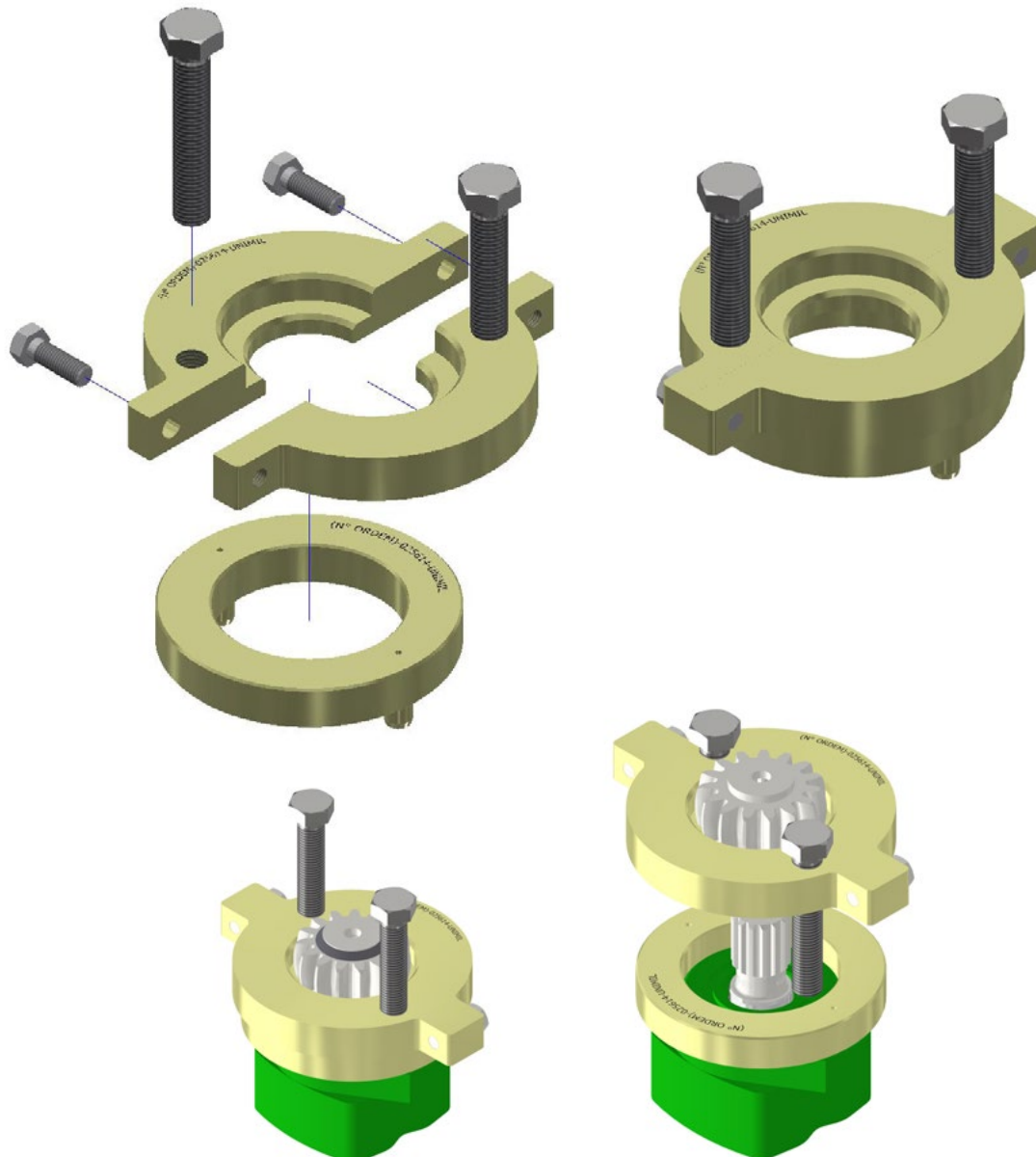
025614

JOHN DEERE® PN

AXT11319

APPLICATION: CH3510 CH3520 CH3522 CH570 CH670 CH950 CH960

- Facilitates removal of internal coupling (Pinion)
- Simple and efficient operation
- Made of high strength material

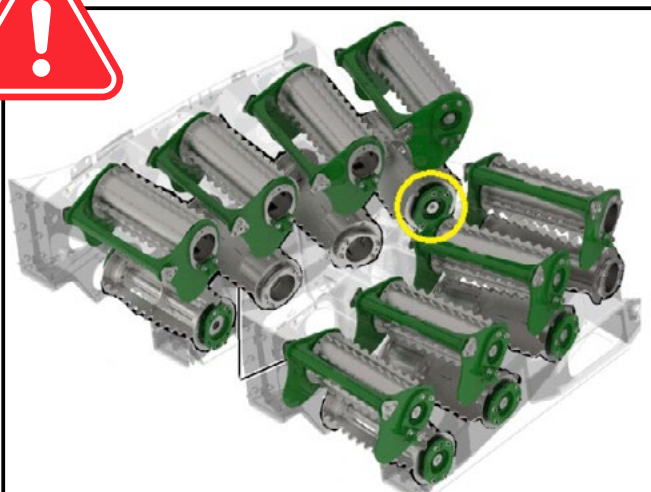
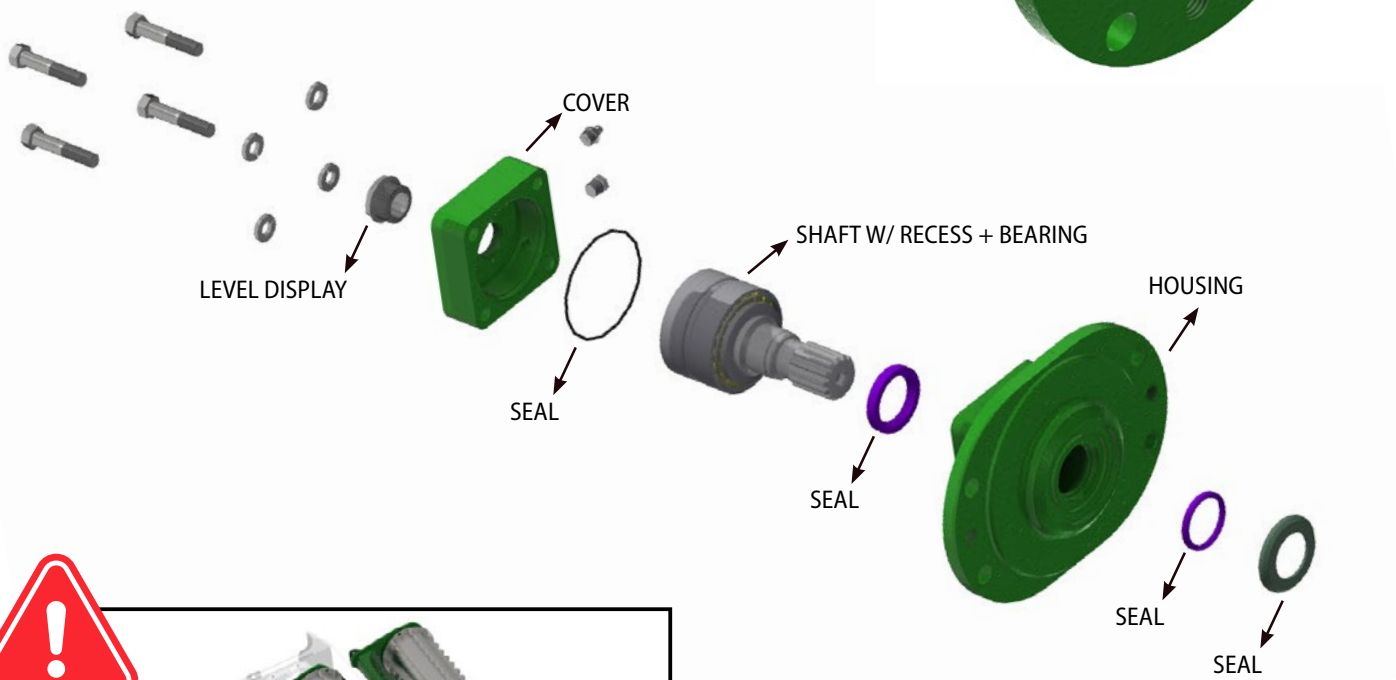
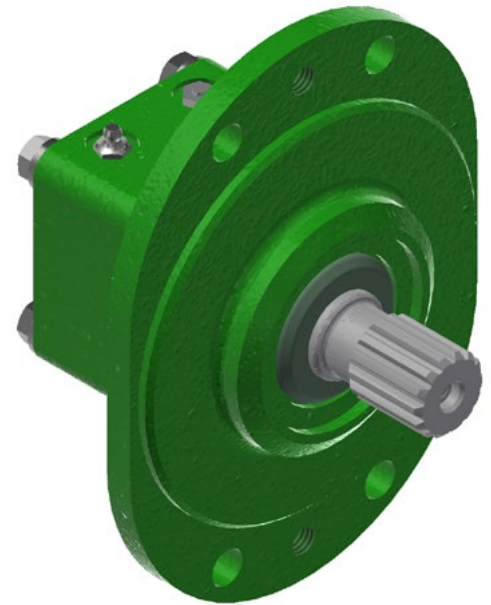


## SPECIAL BEARING - ROTATING HOUSING

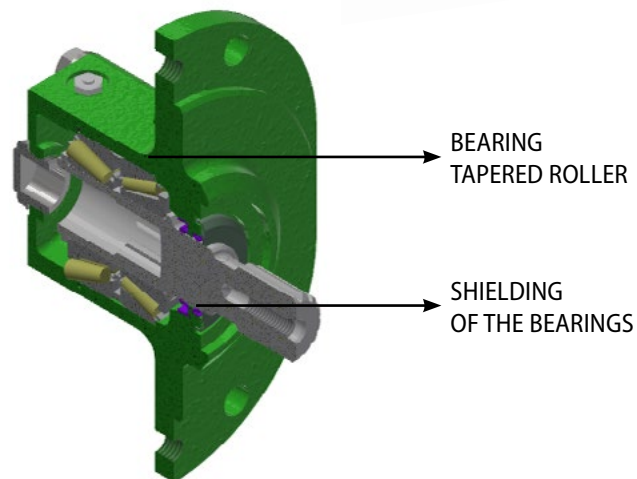
<b>UNIMIL® PN</b>	<b>046424</b>
<b>JOHN DEERE® PN</b>	<b>CB01478069, CB11469977, CB11506128</b>

APPLICATION: CH3510 CH3520 CH3522 CH570 CH670 CH950 CH960

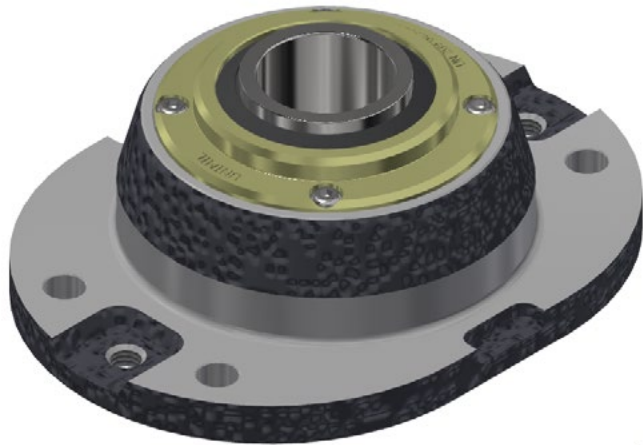
- Designed to operate for one harvest or 3500h from the 3rd roll
- 2x longer lifespan compared to standard competitive model
- Automatic system for internal pressure relief
- Protection system preventing impurities



**IT IS NOT POSSIBLE TO INSTALL IN THESE TWO POSITIONS**



## BEARING HOUSING SEALED W/ SKF BEARING



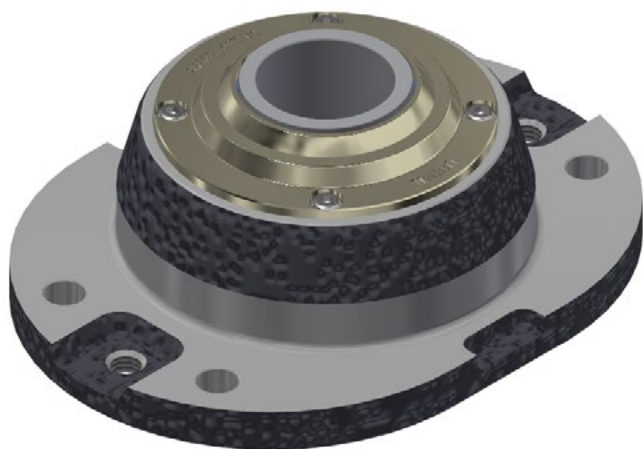
**UNIMIL® PN** 029558

**JOHN DEERE® PN** CB01478069, CB11469977, CB11506128

APPLICATION: CH3510 CH3520 CH3522 CH570 CH670 CH950 CH960

- Sealed bearing
- Front protection with metal ring
- Rubber seal to protect the bearing
- Back protection with metal cover

## SEALED BEARING HOUSING KIT (HOUSING + BEARING + SEAL)



**UNIMIL® PN** 041898

**JOHN DEERE® PN** CB01478069, CB11469977, CB11506128

APPLICATION: CH3510 CH3520 CH3522 CH570 CH670 CH950 CH960

- Sealed bearing
- Front protection with metal ring
- Metal bushing seal + graphite seal for bearing protection
- Back protection with metal cover

## HOUSING - TREATED

**DURABILITY****3x HIGHER**

COMPARED TO STEEL HOUSING



UNIMIL® PN

058742

JOHN DEERE® PN

CXT27826

APPLICATION: CH3520 CH3522 CH570 CH670 CH950 CH960

- Nodular cast iron
- Heat treatment
- High hardness and wear resistance
- 3x longer lasting compared to steel
- 6mm thick wall

## PROTECTION PLATE - HUB



UNIMIL® PN	054654
------------	--------

JOHN DEERE® PN	AXT20608
----------------	----------

APPLICATION: CH950 CH960

---

## SPACER FLANGE - HOUSING



UNIMIL® PN	054655
------------	--------

JOHN DEERE® PN	CXT34375
----------------	----------

APPLICATION: CH950 CH960

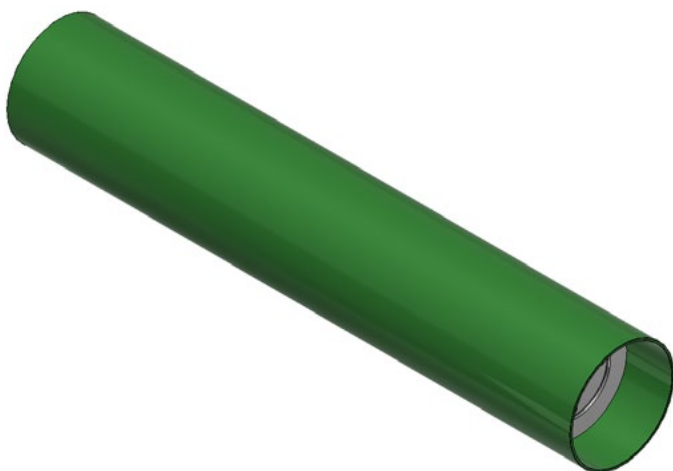
## FORGED SHAFT

**UNIMIL® PN****046681****JOHN DEERE® PN****CB01506389, CXT33927**

APPLICATION: CH950 CH960

- Forged - Increased mechanical strength
- Single piece - Do not bite

## FLAT ROLLER

**UNIMIL® PN****047164****JOHN DEERE® PN****AXT15980**

APPLICATION: CH950 CH960

## PLATE

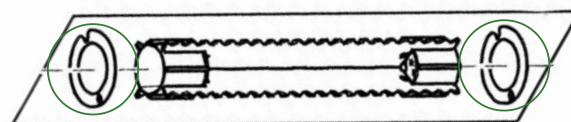


UNIMIL® PN 054801

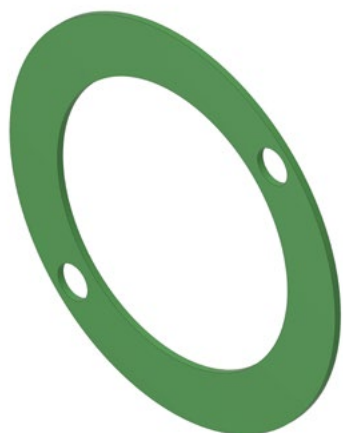
JOHN DEERE® PN CXT24008

APPLICATION: CH950 CH960

- Hardox 450



## ROLLER CAP END PLATE

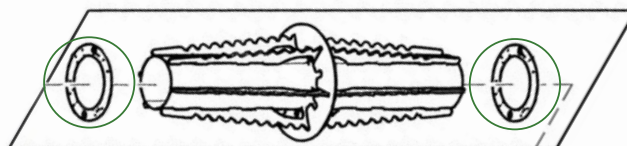


UNIMIL® PN 030821

JOHN DEERE® PN CB01424748

APPLICATION: CH950 CH960

- Hardox 450

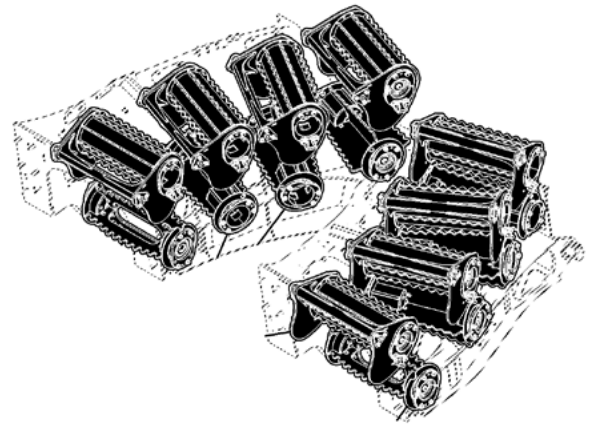




## TRANSPORTER ROLLER

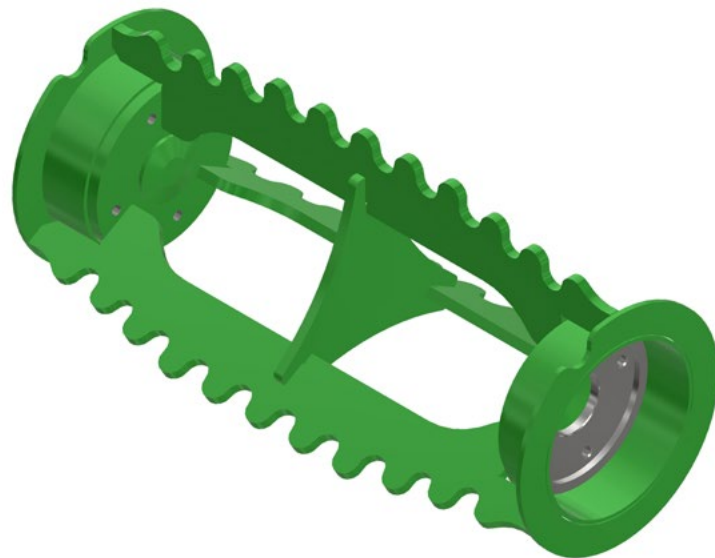
APPLICATION: CH950 CH960

- Coating against wear on the wear plates



### LIFTER 3 WEAR PLATE - LEAKED

UNIMIL® PN	059107
JOHN DEERE® PN	AXT16623



**5%**

**HIGHER AVAILABILITY**

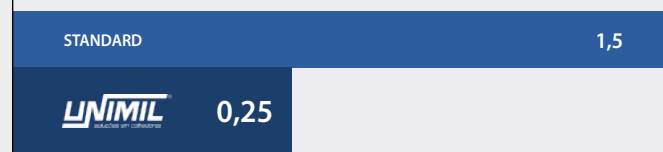
#### MACHINE AVAILABILITY\*



**6x**

**REDUCTION IN THE CLEANING TIME**

#### CLEANING TIME (HOURS/DAY)\*

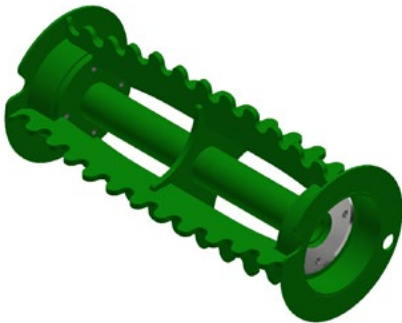
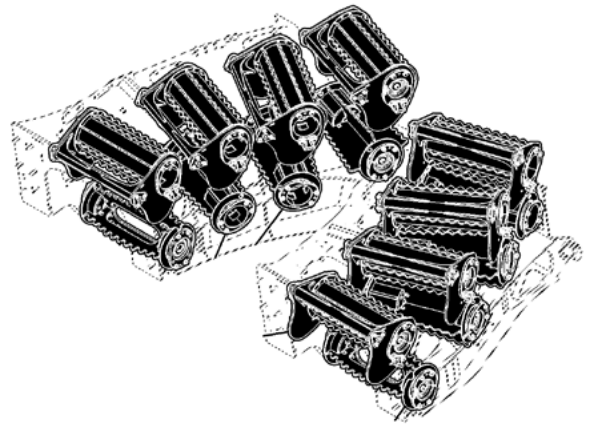


\*Tests carried out in the region of Lençóis Paulista in the harvest 2022

## TRANSPORTER ROLLER

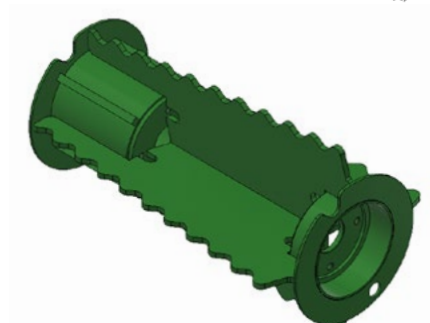
APPLICATION: CH950 CH960

- Coating against wear on the wear plates



**LIFTER 4 WEAR PLATE - LEAKED**

UNIMIL® PN	047166
JOHN DEERE® PN	AXT16623



**BOTTOM 4 WEAR PLATE**

UNIMIL® PN	047156
JOHN DEERE® PN	AXT15968



**CLOSED UPPER**

UNIMIL® PN	047157
JOHN DEERE® PN	AXT15972



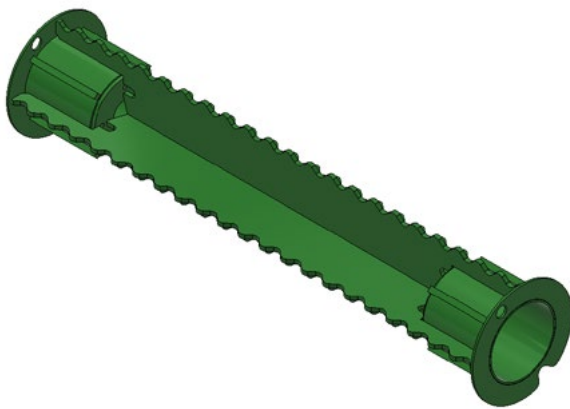
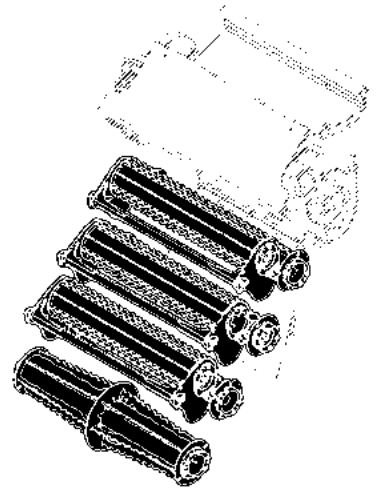
**FRONTAL ARM**

UNIMIL® PN	047512
JOHN DEERE® PN	AXT16082

# TRANSPORTER ROLLER

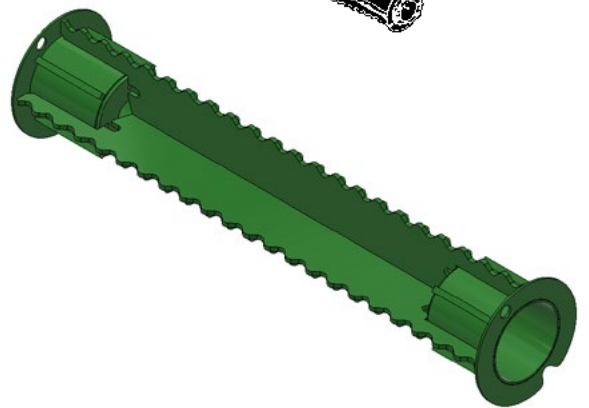
APPLICATION: CH950

- Coating against wear on the wear plates



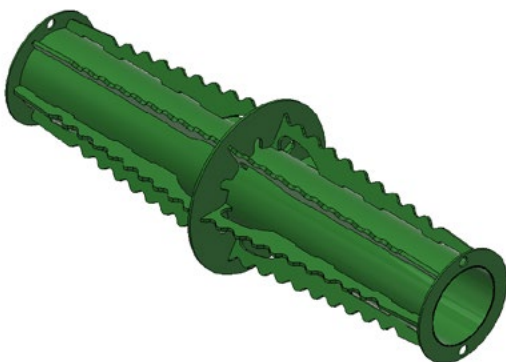
**BOTTOM 4 WEAR PLATE - CLOSED**

UNIMIL® PN	047160
JOHN DEERE® PN	AXT17049



**BOTTOM 4 WEAR PLATE**

UNIMIL® PN	047159
JOHN DEERE® PN	AXT15970



**CLOSED UPPER CURVED**

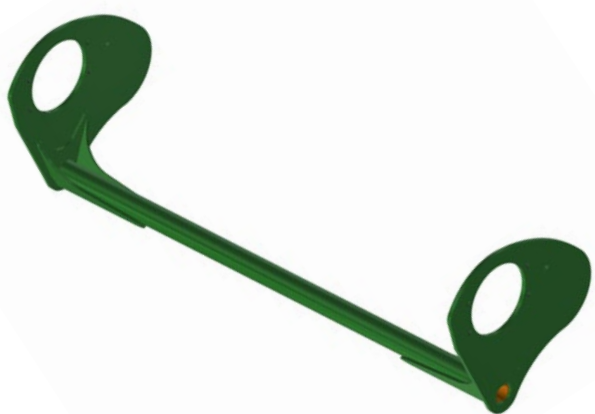
UNIMIL® PN	047161
JOHN DEERE® PN	AXT17065



**UPPER**

UNIMIL® PN	047158
JOHN DEERE® PN	AXT15971

## ROLLER ARM



UNIMIL® PN	047513
------------	--------

JOHN DEERE® PN	AXT16072
----------------	----------

APPLICATION: CH950 CH960

## ROLLER ARM



UNIMIL® PN	056259
------------	--------

JOHN DEERE® PN	AXT18558, AXT20655
----------------	--------------------

APPLICATION: CH950 CH960

## PRE-TIPPER ROLLER

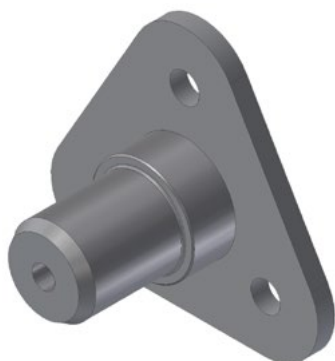


UNIMIL <sup>®</sup> PN	047151
------------------------	--------

JOHN DEERE <sup>®</sup> PN	AXT17174
----------------------------	----------

APPLICATION: CH950 CH960

## PIN - ARM (CRADLE)



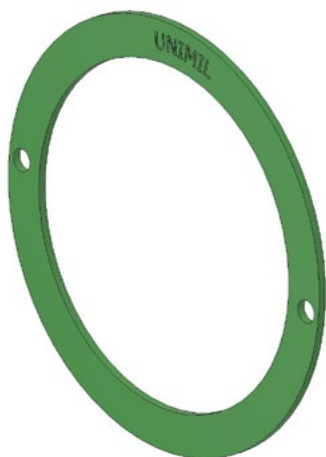
UNIMIL <sup>®</sup> PN	009702
------------------------	--------

JOHN DEERE <sup>®</sup> PN	CB11419911, CB01487612
----------------------------	------------------------

APPLICATION: CH3510 CH3520 CH3522 CH570 CH670 CH950 CH960

- Heat treatment

## RING



UNIMIL® PN	059395
------------	--------

JOHN DEERE® PN	CXT24300
----------------	----------

APPLICATION: CH950 CH960

## ROLLER WEAR PLATE

APPLICATION: CH3510 CH3520 CH3522 CH570 CH670 CH960



**01** 907MM 1/4"

UNIMIL® PN	047355
------------	--------

JOHN DEERE® PN	CXT24226
----------------	----------

**02** 181MM 1/4"

UNIMIL® PN	047357
------------	--------

JOHN DEERE® PN	CXT30422
----------------	----------

**03** 99MM 1/4"

UNIMIL® PN	047356
------------	--------

JOHN DEERE® PN	CXT30421
----------------	----------

## ARM PIN

**UNIMIL<sup>®</sup> PN****046676****JOHN DEERE<sup>®</sup> PN****CXT29645**

APPLICATION: CH950 CH960

# CHOPPER



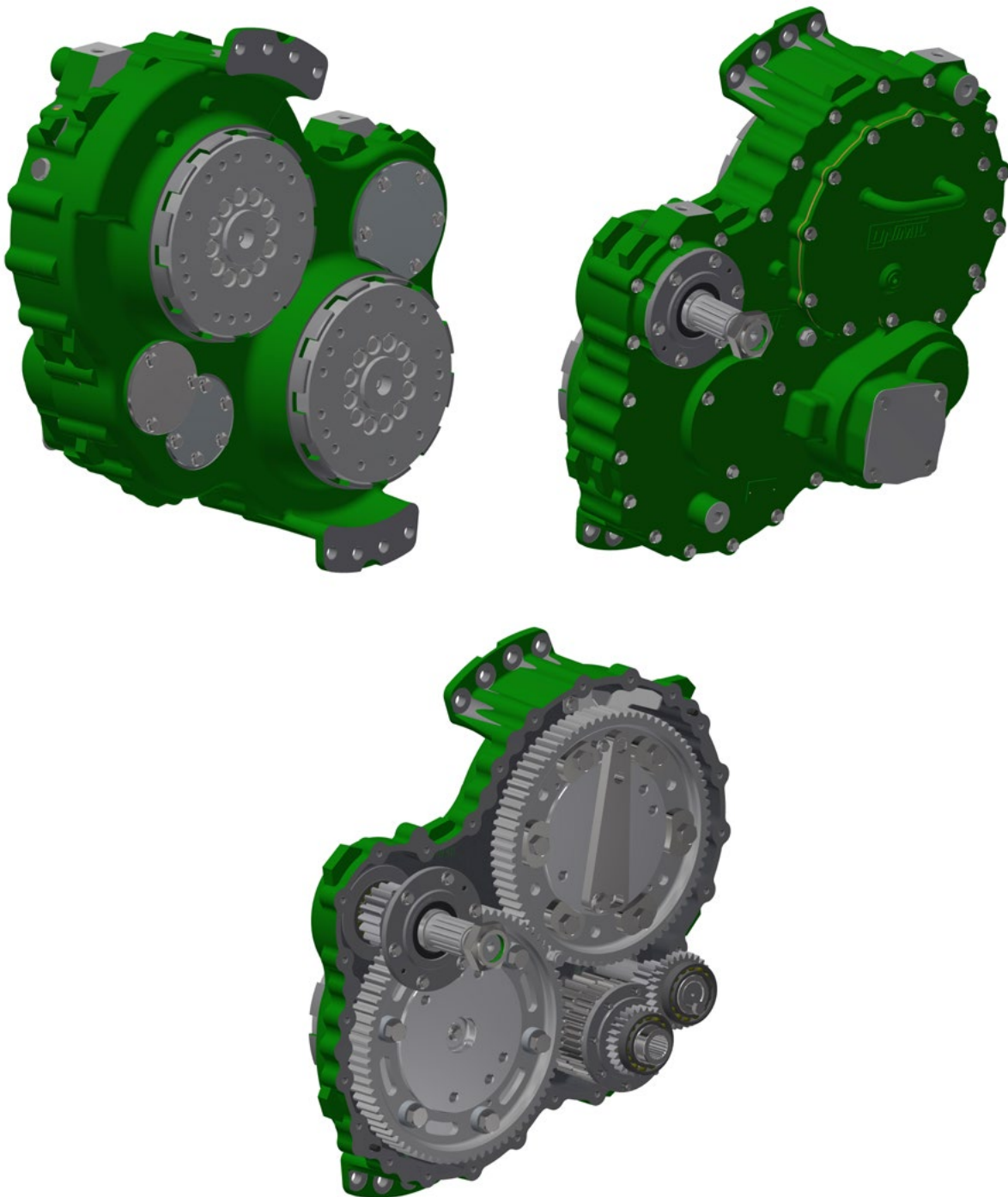
# CHOPPER GEARBOX - COMPLETE

3rd VERSION

UNIMIL® PN 054769

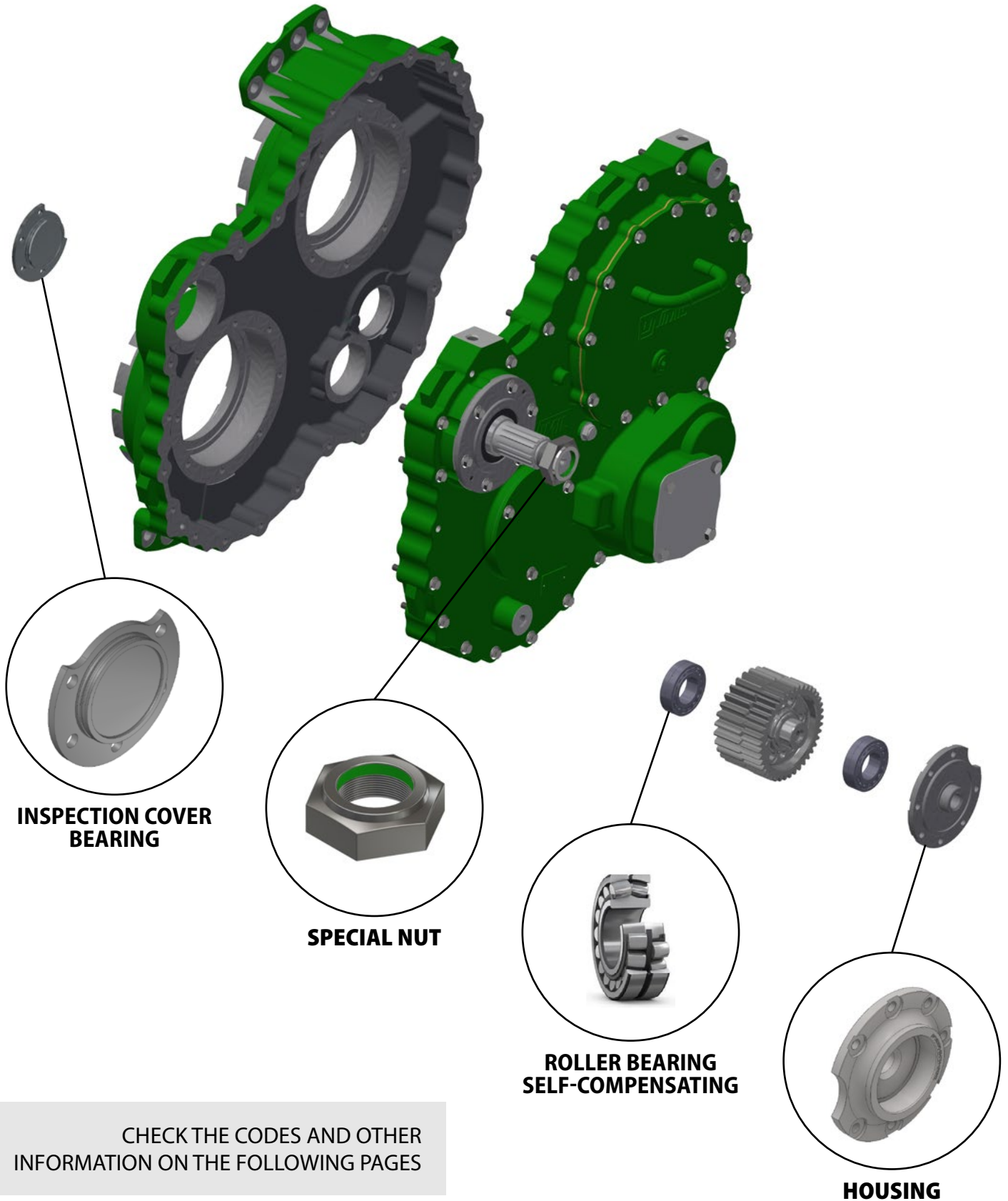
JOHN DEERE® PN DE31262, DE31980, DE32261, DE32579

APPLICATION: CH570 CH670 CH950 CH960



# CHOPPER GEARBOX - IMPROVEMENTS

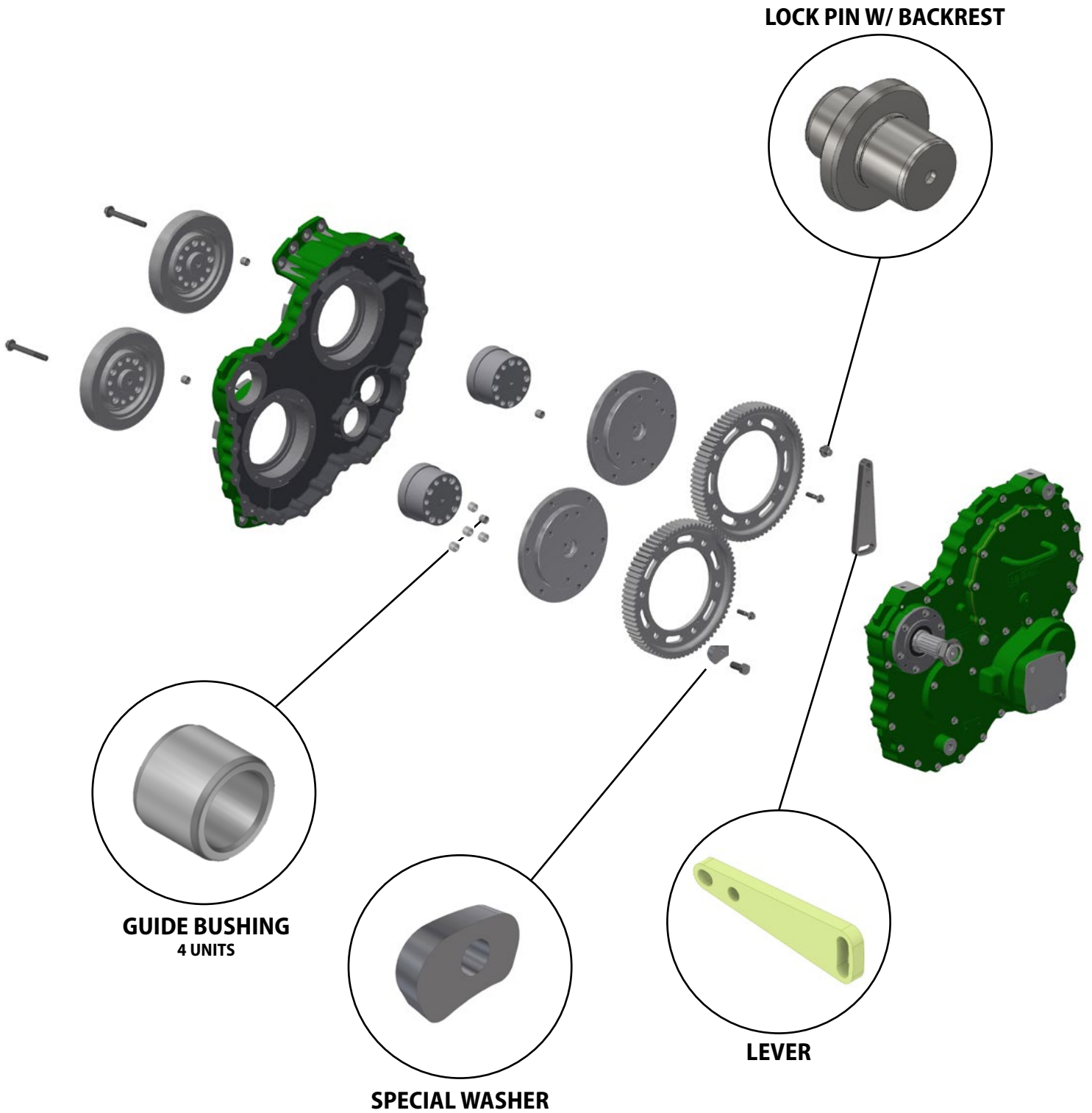
3rd VERSION



CHECK THE CODES AND OTHER INFORMATION ON THE FOLLOWING PAGES

# CHOPPER GEARBOX - IMPROVEMENTS

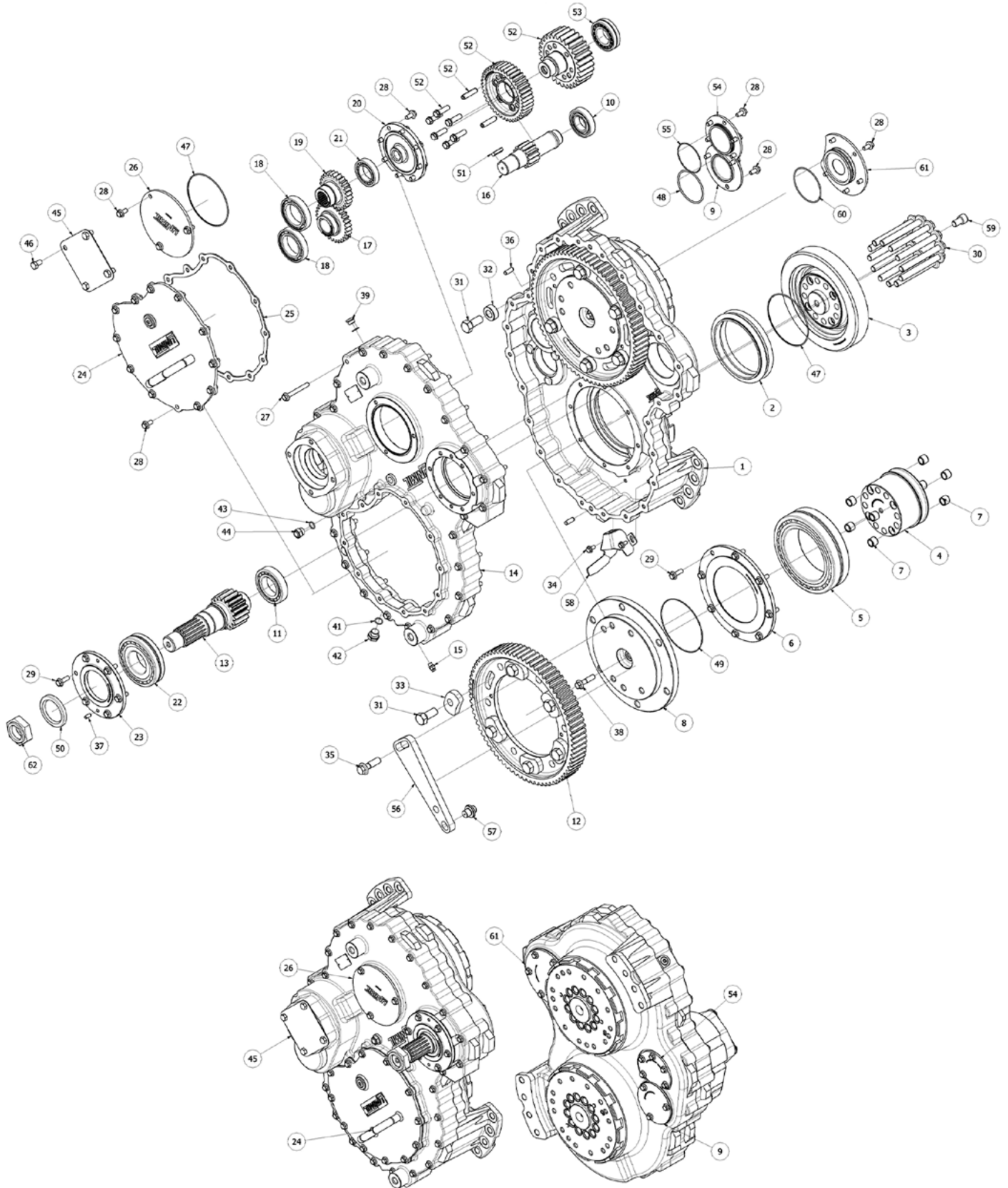
3rd VERSION



CHECK THE CODES AND OTHER INFORMATION ON THE FOLLOWING PAGES

# CHOPPER GEARBOX - EXPLODED VIEW

3rd VERSION



## CHOPPER GEARBOX - PARTS LIST

3rd VERSION

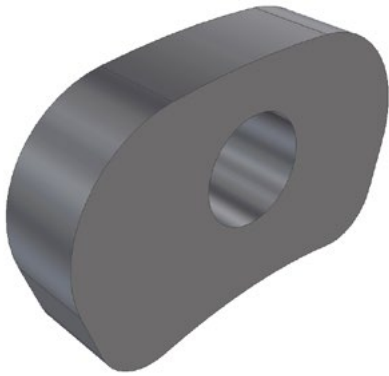
ITEM	CÓD. UNIMIL	DESCRIÇÃO	QTDE
1	054761	Chopper Box	1
2	010791	Seal (Hydrogenated)	2
3	055663	Flange Housing	2
4	055670	Chopper Hub	2
5	011360	Bearing	2
6	035466	Ring	2
7	035460	Bushing	16
8	035453	Adapter	2
9	035440	Plate	1
10	035463	Bearing NTN	1
11	045015	Bearing SKF	1
12	025533	Gear	2
13	030783	Pinion	1
14	054762	Chopper Box Plate	1
15	035442	Valve	1
16	035459	Shaft	1
17	035439	Gear	1
18	035457	Bearing NSK	2
19	035445	Pinion	1
20	054704	Bearing and Housing	1
21	035456	Bearing	1
22	051622	Bearing	1
23	035465	Bearing Cup	1
24	035458	Small Plate Chopper Box	1
25	035438	Gasket	1
26	035447	Plate	1
27	023720	Screw	26
28	018500	Screw	36
29	023294	Screw	22
30	035450	Screw	24
31	055799	Screw	12
32	047370	Washer	6
33	056241	Special Washer	6
34	022461	Cap Screw	2
35	035449	Screw	1
36	030317	Pin	2
37	035441	Pin	2
38	055884	Screw	2
39	026376	Drain Plug	1
41	025157	O-Ring	1
42	056170	Plug	1
43	002942	O-Ring	1
44	056143	Oil Level Display	1

ITEM	CÓD. UNIMIL	DESCRIÇÃO	QTDE
45	018726	Plate	1
46	002825	Screw	4
47	057879	O-Ring	3
48	056154	O-Ring	1
49	056146	O-Ring	2
50	056145	Seal	1
51	035443	Key	1
52	054880	Gear Set	1
53	051128	Bearing	2
54	054749	Bottom Plate	1
55	056139	O-Ring	1
56	055717	Lever	1
57	055797	Pin	1
58	056086	Funnel	1
59	056141	Screw	2
60	056758	O-Ring	1
61	056756	Direction Shaft Insp. Plate	1
62	055800	Nut	1

# CHOPPER GEARBOX - VERSIONS

1st VERSION		2st VERSION		3st VERSION	
<b>CYLINDRICAL ROLLER BEARING</b>	<b>CYLINDRICAL ROLLER BEARING</b>	<b>SELF-ALIGNING ROLLER BEARING</b>	<b>SELF-ALIGNING ROLLER BEARING</b>	<b>SELF-ALIGNING ROLLER BEARING</b>	<b>SELF-ALIGNING ROLLER BEARING</b>
UNIMIL® PN 045916	UNIMIL® PN 038496	UNIMIL® PN 051128	UNIMIL® PN 051127	UNIMIL® PN 051128	UNIMIL® PN 051128
JOHN DEERE® PN RE167032	JOHN DEERE® PN JD9510	JOHN DEERE® PN DC221239	JOHN DEERE® PN DE32353	JOHN DEERE® PN DC221239	JOHN DEERE® PN DC221239
NJ209 45X85X19 60 KN CARGA	NJ207 35X72X17 48 KN CARGA	22209 EJ 45X85X23 94 KN CARGA (+36%)	22207 EJ 35X72X23 80 KN CARGA (+40%)	22209 EJ 45X85X23 94 KN CARGA	22209 EJ 45X85X23 94 KN CARGA (+15%)
<b>GEAR KIT</b>	<b>FRONT HOUSING</b>	<b>GEAR KIT + BEARING</b>	<b>FRONT HOUSING</b>	<b>GEAR KIT</b>	<b>FRONT HOUSING</b>
UNIMIL® PN 042349	UNIMIL® PN 038496	UNIMIL® PN 051126	UNIMIL® PN 051124	UNIMIL® PN 054820	UNIMIL® PN 054704
JOHN DEERE® PN DE31979	JOHN DEERE® PN CE31746	JOHN DEERE® PN DE32428	JOHN DEERE® PN CE35534	JOHN DEERE® PN DE32368	JOHN DEERE® PN CE35181

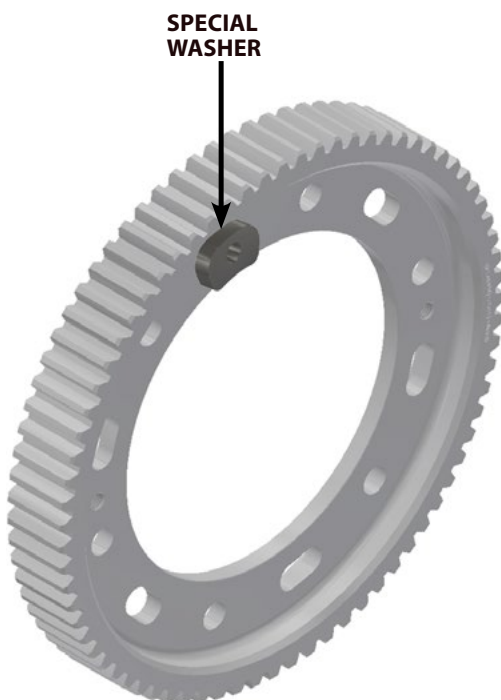
## SPECIAL WASHER



UNIMIL® PN	056922
JOHN DEERE® PN	CE34447

APPLICATION: CH570 CH670 CH950 CH960

- Mat. high performance
- Improved synchronization maintenance
- Does not damage gear surface
- Increases the contact area



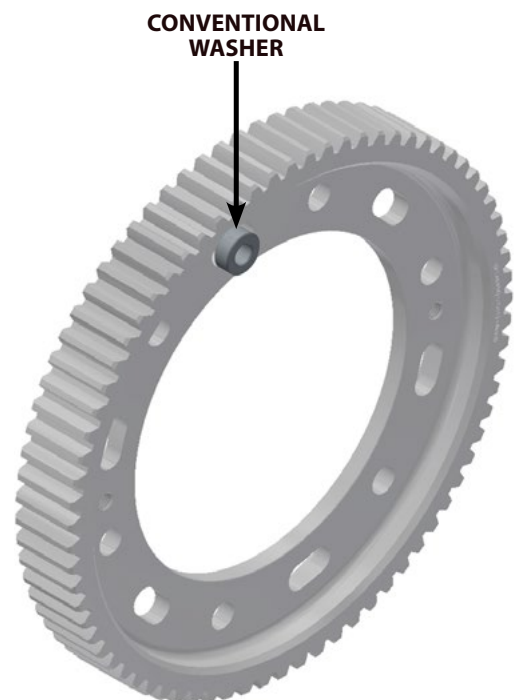
## CONVENTIONAL WASHER



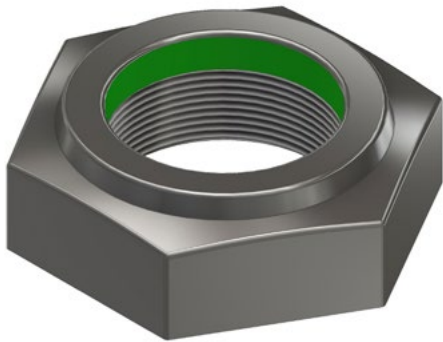
UNIMIL® PN	047370
JOHN DEERE® PN	CE34447

APPLICATION: CH570 CH670 CH950 CH960

- Conventional model
- Heat treatment



## SPECIAL HEX NUT - PARLOCK 1.3/4" 16 UNEF



UNIMIL® PN

055800

JOHN DEERE® PN

CXT36393, 0151340059

APPLICATION: CH3510 CH3520 CH3522 CH570 CH670 CH950 CH960

- 20% higher than conventional nut
- Greater number of threads, preventing damage to the shaft thread during tightening



SPECIAL HEX NUT



**20%  
HIGHER**  
COMPARED TO  
CONVENTIONAL MODEL



SPECIAL



CONVENTIONAL



## GUIDE BUSH



UNIMIL® PN	035460
------------	--------

JOHN DEERE® PN	CE32717
----------------	---------

APPLICATION: CH570 CH670 CH950 CH960

- thermal treatment

## NEW LOCK PIN WITH BACKREST



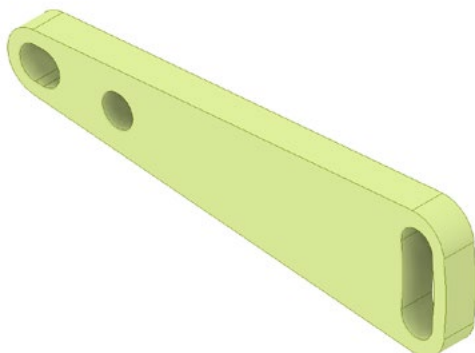
UNIMIL® PN	055797
------------	--------

JOHN DEERE® PN	CE32437, CE35650
----------------	------------------

APPLICATION: CH570 CH670 CH950 CH960

- Back flange, facilitates maintenance
- Prevents the pin from “falling” into the system

## LEVER



UNIMIL® PN	055717
------------	--------

JOHN DEERE® PN	CE35892
----------------	---------

APPLICATION: CH570 CH670 CH950 CH960

- Developed with new design and special material, avoiding deformations

## FLANGE

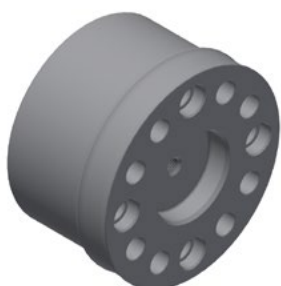


UNIMIL® PN	055663
------------	--------

JOHN DEERE® PN	CE35799
----------------	---------

APPLICATION: CH570 CH670 CH950 CH960

## BUSHING HOUSING HUB



UNIMIL® PN	055670
------------	--------

JOHN DEERE® PN	CE35798
----------------	---------

APPLICATION: CH570 CH670 CH950 CH960

## NEW FLANGE

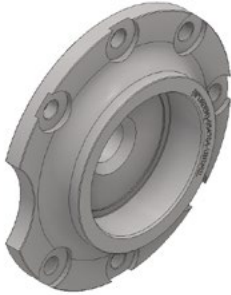


UNIMIL® PN	055798
------------	--------

JOHN DEERE® PN	CE35797
----------------	---------

APPLICATION: CH570 CH670 CH950 CH960

## NEW HOUSING

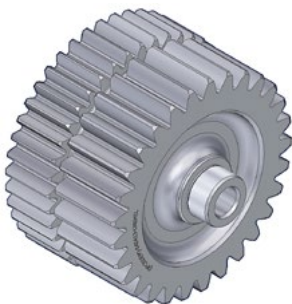


UNIMIL® PN	054704
------------	--------

JOHN DEERE® PN	CE35181
----------------	---------

APPLICATION: CH570 CH670 CH950 CH960

## GEAR DRIVE KIT

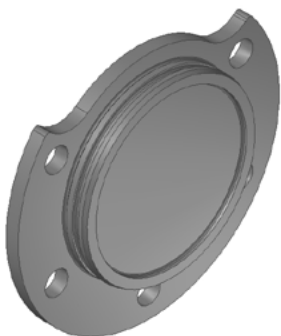


UNIMIL® PN	054820
------------	--------

JOHN DEERE® PN	DE32368
----------------	---------

APPLICATION: CH570 CH670 CH950 CH960

## INSPECTION COVER



UNIMIL® PN	054749
------------	--------

JOHN DEERE® PN	CE35634
----------------	---------

APPLICATION: CH570 CH670 CH950 CH960

## GEAR 75Z

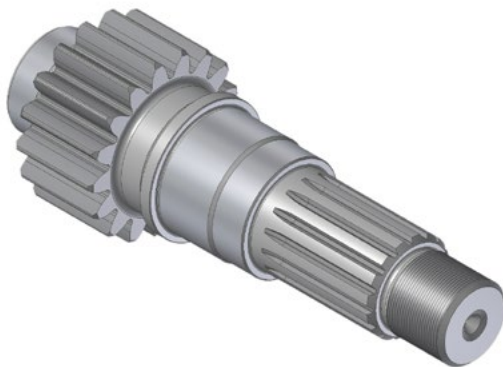


UNIMIL <sup>®</sup> PN	025533
------------------------	--------

JOHN DEERE <sup>®</sup> PN	CE32024, CB01417877
----------------------------	---------------------

APPLICATION: CH3510 CH3520 CH3522 CH570 CH670 CH950 CH960

## PINION SHAFT

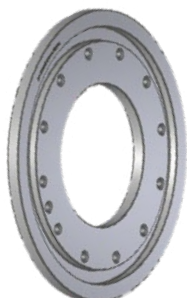


UNIMIL <sup>®</sup> PN	030783
------------------------	--------

JOHN DEERE <sup>®</sup> PN	CE31728, CE32781
----------------------------	------------------

APPLICATION: CH570 CH670 CH950 CH960

## PROTECCION RING (LOWER)



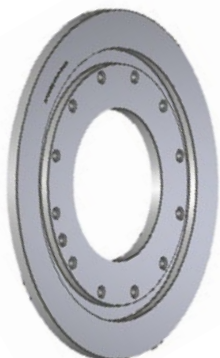
**UNIMIL® PN** 048433

**JOHN DEERE® PN** CXT27660

APPLICATION: CH950 CH960

- Protects against dust and impurities

## PROTECCION RING (HIGHER)



**UNIMIL® PN** 048434

**JOHN DEERE® PN** CXT27659

APPLICATION: CH950 CH960

- Protects against dust and impurities

## FORGED CHIPPER CUBE



**UNIMIL® PN** 046684

**JOHN DEERE® PN** CXT21358

APPLICATION: CH950 CH960

## FLYWHEEL



UNIMIL® PN 027550

JOHN DEERE® PN CB01480472

APPLICATION: CH570 CH670 CH950 CH960

## BRONZE BUSHING

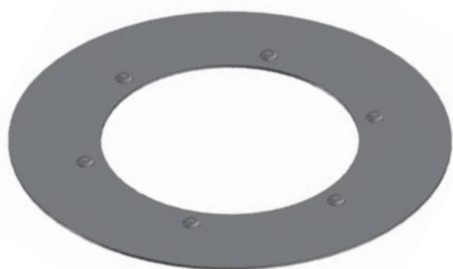


UNIMIL® PN 003856

JOHN DEERE® PN 0261305008

APPLICATION: CH570 CH670 CH950 CH960

## STAINLESS PLATE



UNIMIL® PN 003827

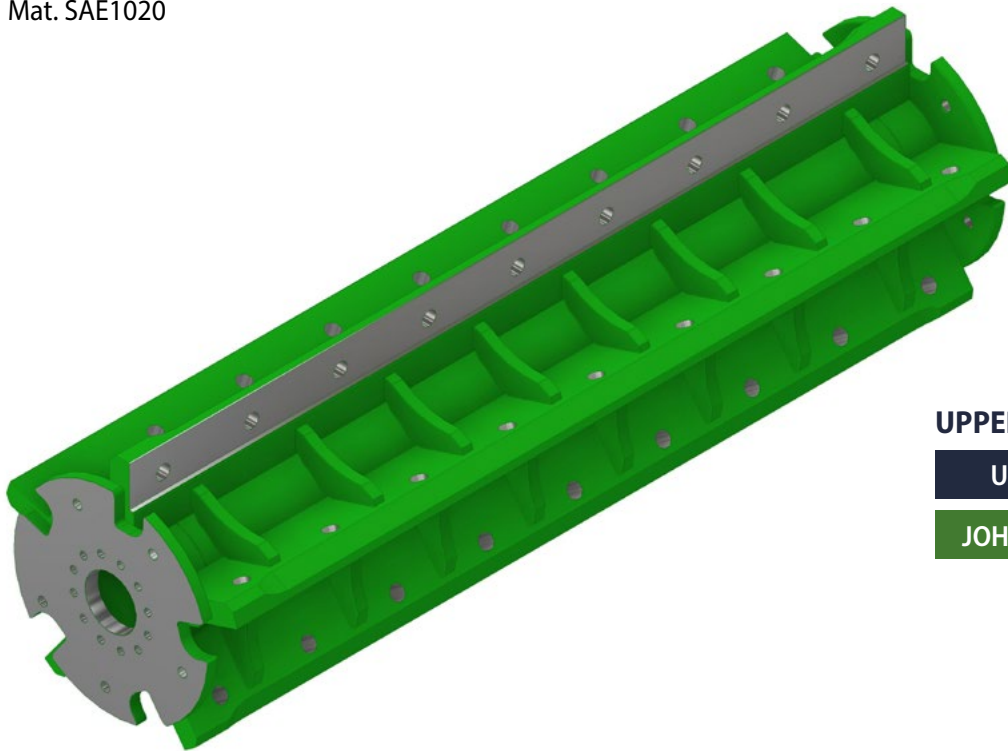
JOHN DEERE® PN 0621305006

APPLICATION: CH950 CH960

## CHOPPER ROLLER (05 KNIVES)

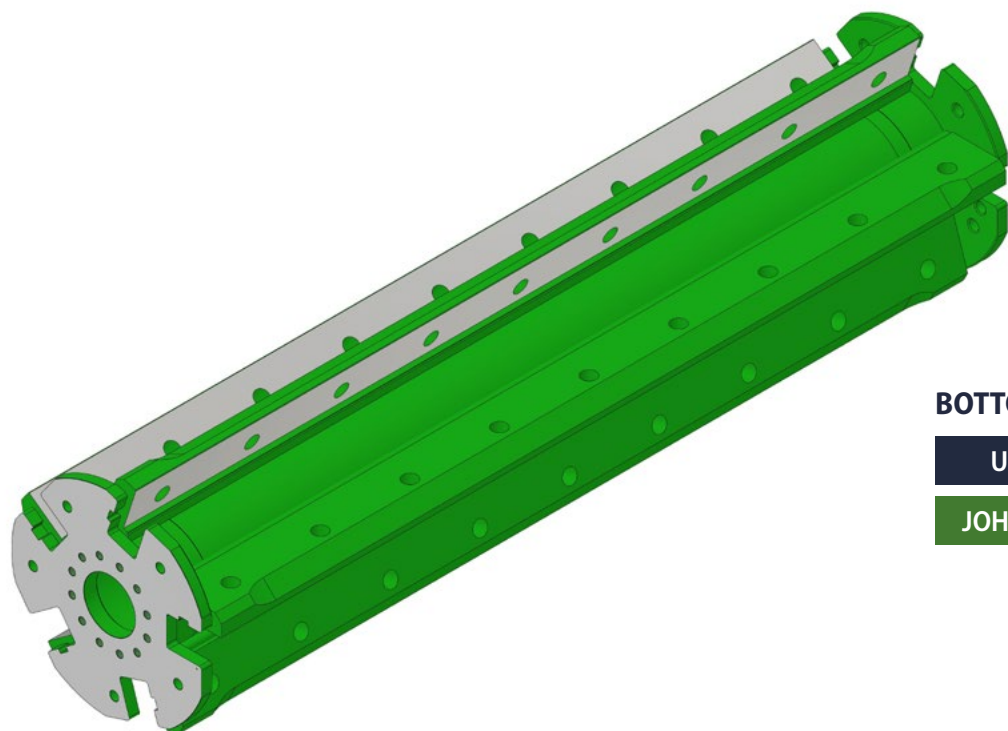
APPLICATION: CH950 CH960

- Mat. SAE1020



### UPPER

UNIMIL® PN	047177
JOHN DEERE® PN	AXT18230



### BOTTOM

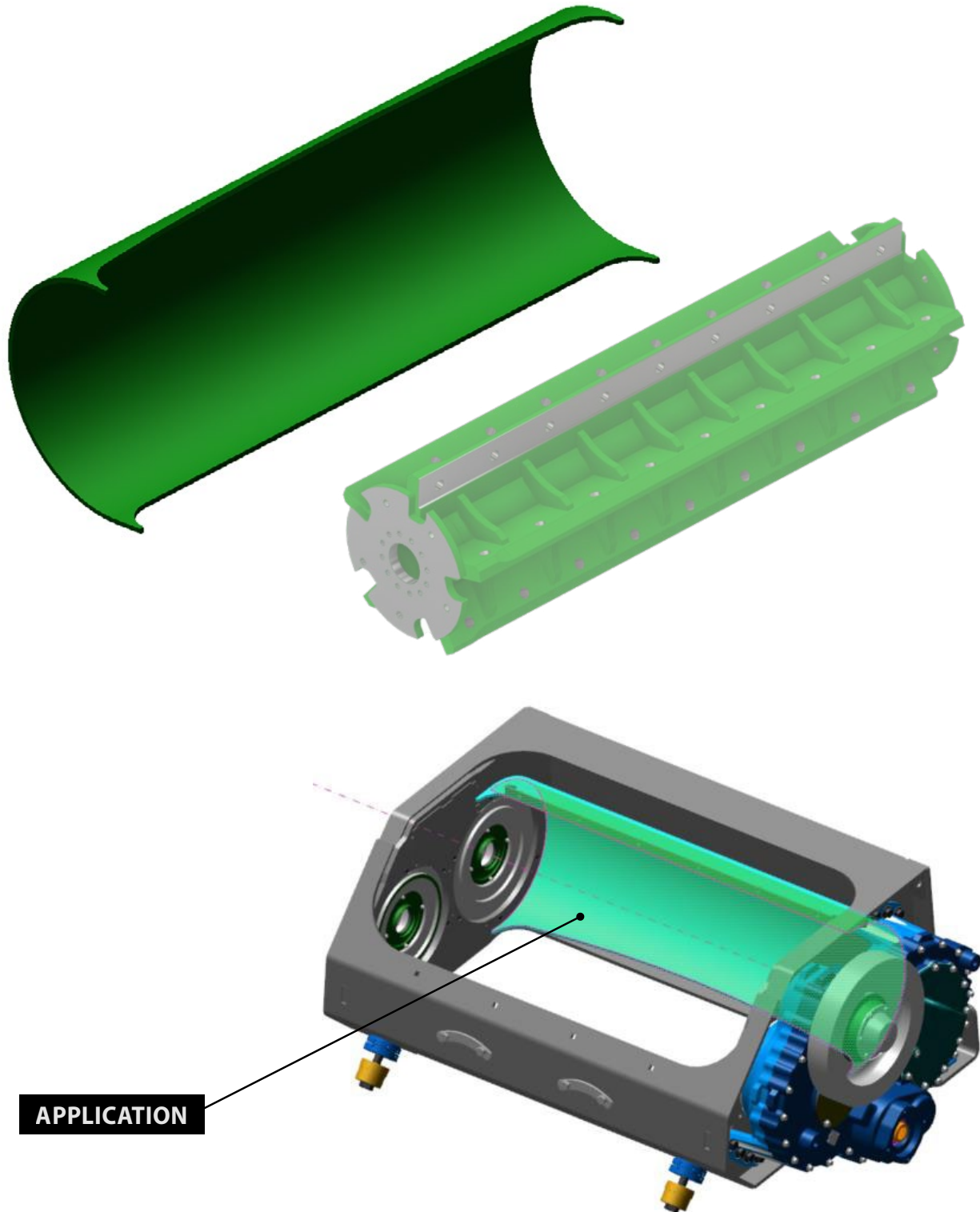
UNIMIL® PN	047178
JOHN DEERE® PN	AXT18232

## CHOPPER ROLLER FRAME PLATE PROTECTION

UNIMIL<sup>®</sup> PN

061027

APPLICATION: CH950 CH960



APPLICATION



## CHOPPER CLAMP

UNIMIL<sup>®</sup> PN

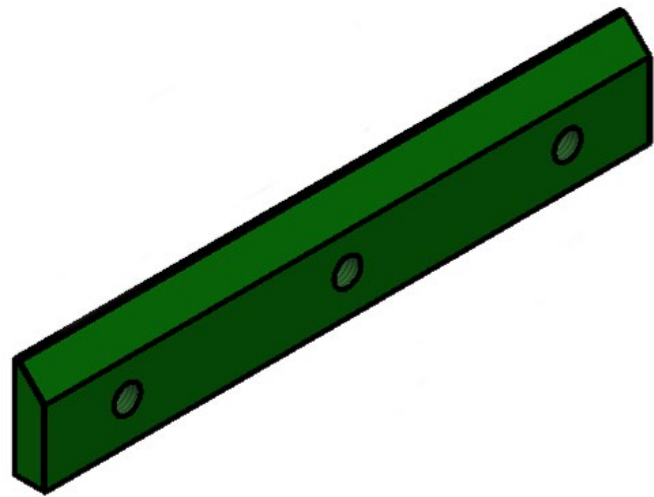
043708

JOHN DEERE<sup>®</sup> PN

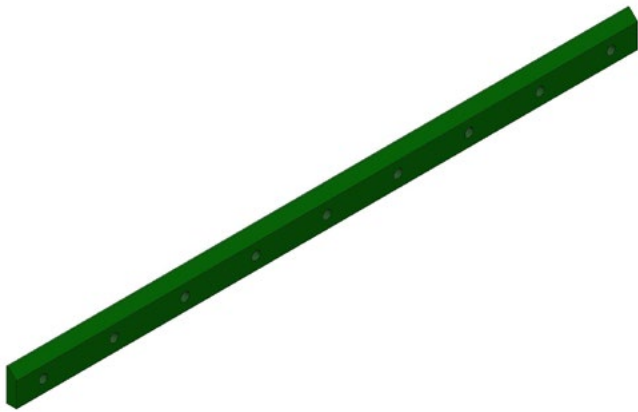
CXT21966

APPLICATION: CH950 CH960

- Sold separately - Required 03 pcs
- Best value for money
- Lower maintenance cost
- Lower risk of warping
- Greater ease in assembly
- Better support of knives



## CHESTNUT



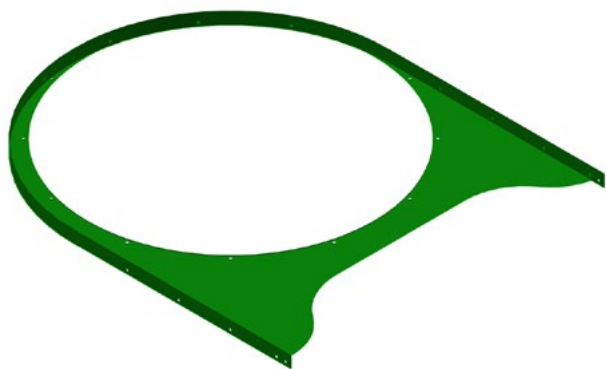
UNIMIL <sup>®</sup> PN	047011
------------------------	--------

JOHN DEERE <sup>®</sup> PN	CXT21966
----------------------------	----------

APPLICATION: CH950 CH960

# EXTRACTORS

## MOUNTING PARTS



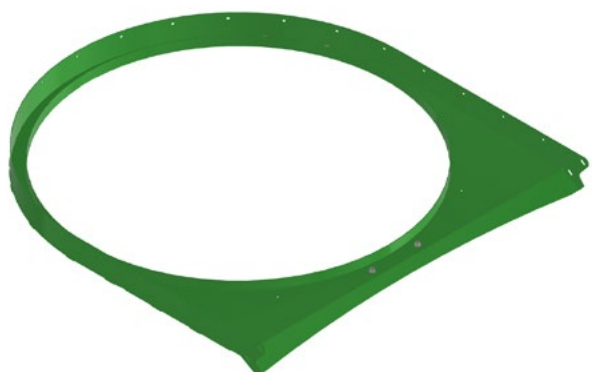
UNIMIL® PN	048131
------------	--------

JOHN DEERE® PN	AXT15849
----------------	----------

APPLICATION: CH950 CH960

---

## SHEET



UNIMIL® PN	047027
------------	--------

JOHN DEERE® PN	AXT18477, AXT20175
----------------	--------------------

APPLICATION: CH950 CH960

# MODULATED METALLIC HOOD

**PAT. REQ.**

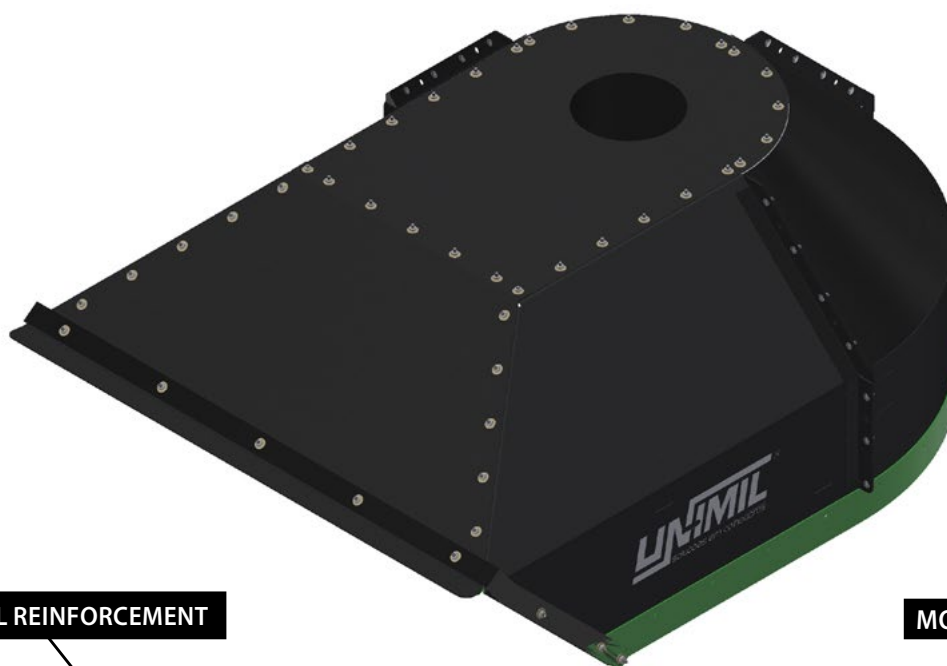
- UNIMIL® PN** 052079
- JOHN DEERE® PN** CB01449114, CB01486007, NW01449114



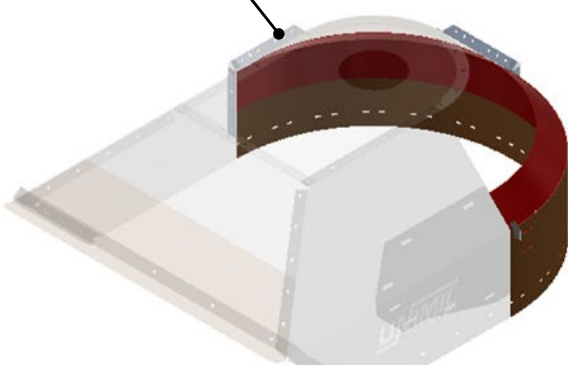
**2x  
HIGHER**

COMPARED TO THE CONVENTIONAL

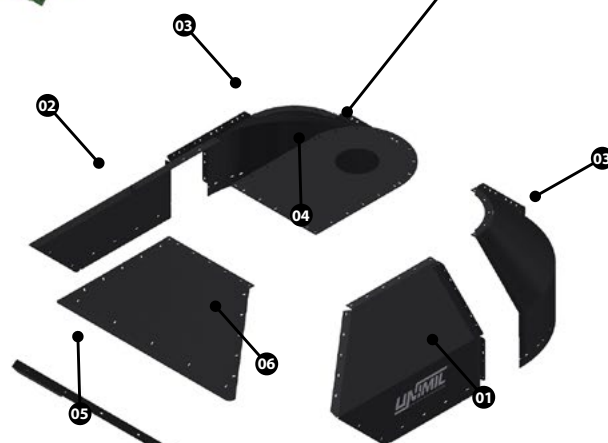
APPLICATION: CH3510 CH3520 CH3522 CH570 CH670 CH950 CH960



**INTERNAL REINFORCEMENT**



**MODULAR DESIGN**



- High resistance to wear
- High performance material
- Durability 2x higher (Field tests - Crop 22/23)
- Modular design - Facilitates logistics and maintenance
- Internal reinforcement - Externally welded sheet
- No ruptures as in conventional models

PARTS LIST			
ITEM	Unimil® pn	DESCRIPTION	QTD
01	052068	SIDE PLATE (RH)	1
02	052094	SIDE PLATE (LH)	1
03	052076	BACK PLATE	2
04	044919	TOP PLATE	1
05	044921	FRONT STRAP	1
06	052098	FRONT PLATE	1



## PRIMARY HOOD 22 MM



UNIMIL® PN

038344

JOHN DEERE® PN

CB01449114, CB01486007, NW01449114

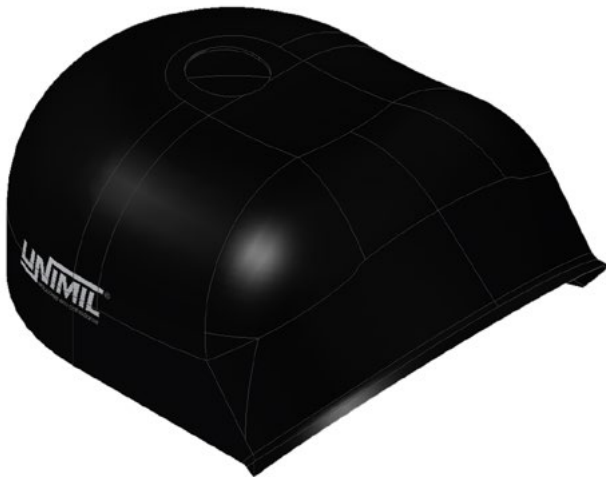
APPLICATION: CH3510 CH3520 CH3522 CH570 CH670 CH950 CH960

- Reinforced 22 mm (140kg / 308lb)
- The whole hood is manufactured with a thickness of 22 mm
- Increased impact resistance
- Coating is not required
- Pure material, high density and low porosity



22MM - IN ALL STRUCTURE

## PRIMARY HOOD 12,70 MM



UNIMIL® PN	019732
------------	--------

JOHN DEERE® PN	CB01486007
----------------	------------

APPLICATION: CH3510 CH3520 CH3522 CH570 CH670 CH950 CH960

- Thickness 12.7mm - 80 kg
- Coating is not required
- Pure material, high density and low porosity

## COATING HOOD

APPLICATION: CH570 CH670 CH950 CH960



LEFT SIDE

UNIMIL® PN	044679
------------	--------

JOHN DEERE® PN	CXT25750
----------------	----------

RIGHT SIDE

UNIMIL® PN	044680
------------	--------

JOHN DEERE® PN	CXT25751
----------------	----------

## SECONDARY HOOD



UNIMIL® PN	046711
------------	--------

JOHN DEERE® PN	CXT24766
----------------	----------

APPLICATION: CH950 CH960

- Mat. PEAD
- Thickness 12.7mm / 39kg

## SUPPORT - REINFORCED SQUARE TUBE



UNIMIL® PN	047383
------------	--------

JOHN DEERE® PN	AXT19229, AXT20785
----------------	--------------------

APPLICATION: CH3510 CH3520 CH3522 CH570 CH670 CH950 CH960

- High strength square tube
- Developed to offer greater mechanical capacity
- Standardization for all John Deere harvester models

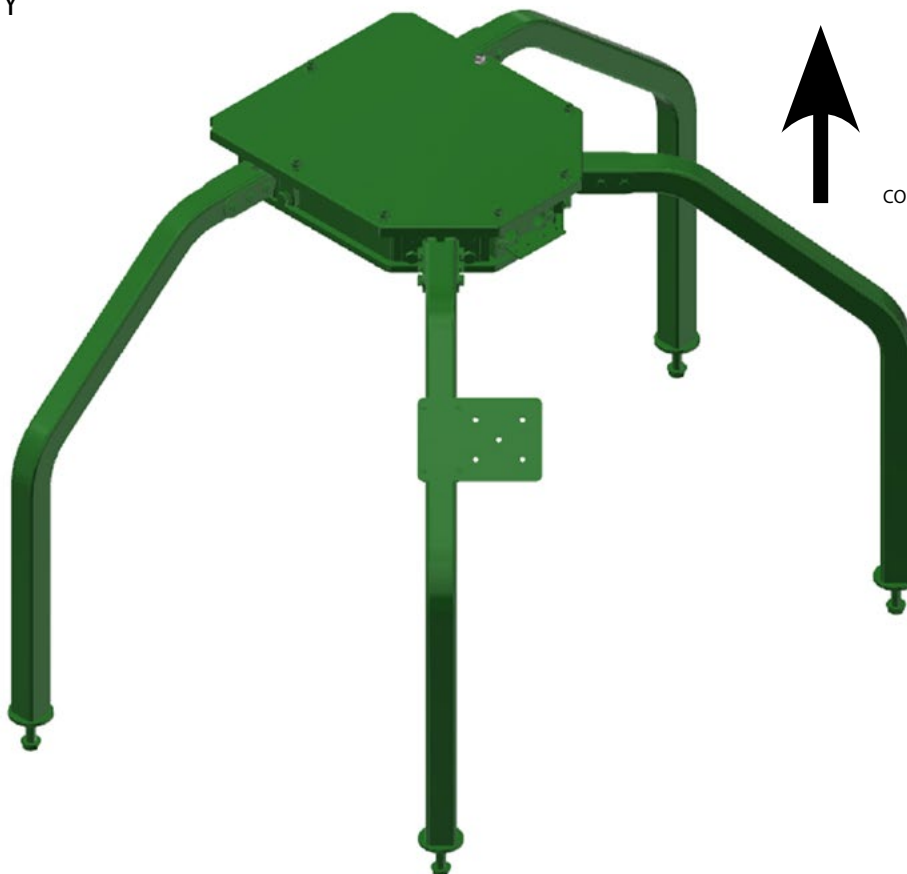


# MODULAR SUPPORT

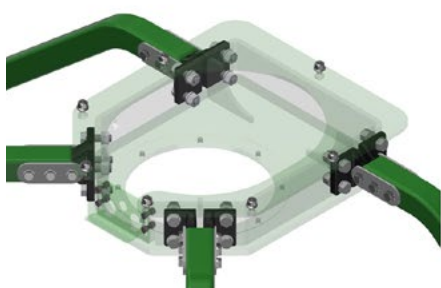
UNIMIL EXCLUSIVITY

**PAT. REQ.**

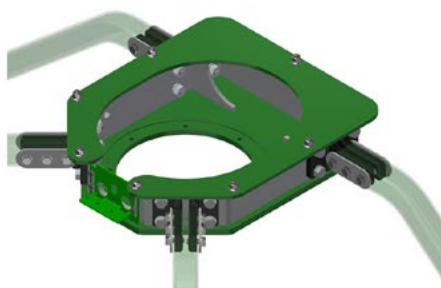
**2x HIGHER**  
 COMPARED TO CONVENTIONAL



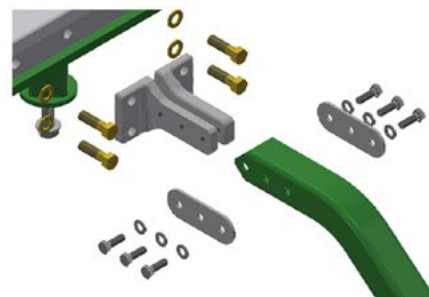
**MODULAR ARMS**



**GREATER VIBRATION ABSORPTION**



**INDEPENDENT EXCHANGE**



**UNIMIL® PN** 050404

**JOHN DEERE® PN** AXT10345, AXT15471, CB11472923, AXT20785

APPLICATION: CH3510 CH3520 CH3522 CH570 CH670 CH950 CH960

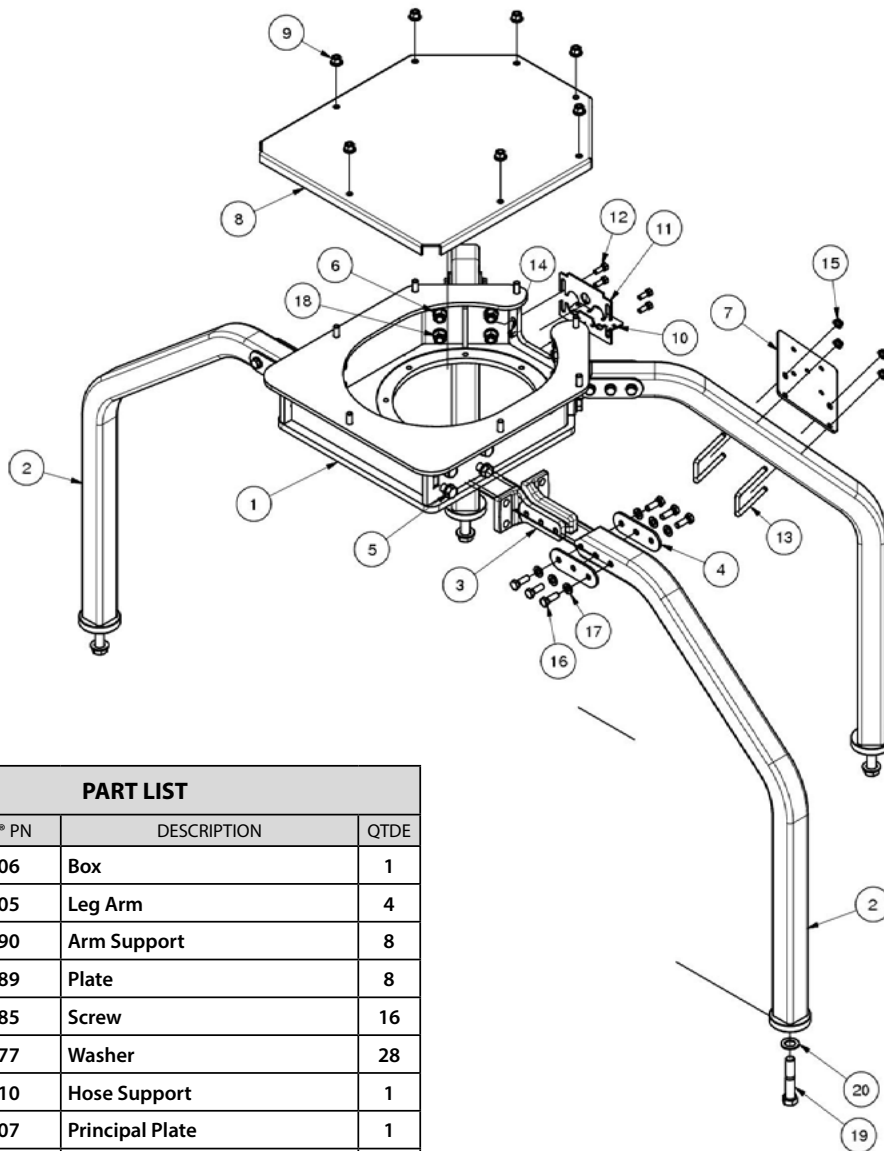
- Modular design: Allows independent arm replacement and facilitates transport, storage and maintenance
- Greater vibration absorption of the system avoiding cracks
- 2x greater durability expectation (Tests - 22/23 Harvest)

**PARTS LIST ON NEXT PAGE**



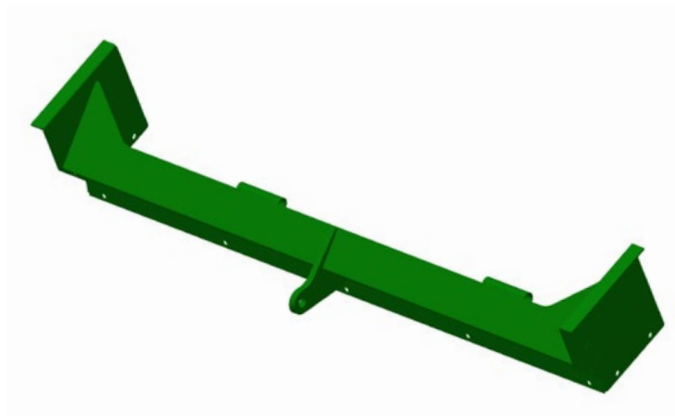
## MODULAR SUPPORT - PARTS LIST

UNIMIL EXCLUSIVITY

**PAT. REQ.**


PART LIST			
ITEM	UNIMIL® PN	DESCRIPTION	QTDE
1	050406	Box	1
2	050405	Leg Arm	4
3	016790	Arm Support	8
4	016789	Plate	8
5	007185	Screw	16
6	001377	Washer	28
7	050410	Hose Support	1
8	050407	Principal Plate	1
9	050412	Nut	7
10	050408	Bottom Hose Support	1
11	050409	Upper Hose Support	1
12	003537	Screw	4
13	050411	U Clip	2
14	042445	Nut	4
15	009916	Hex Nut	4
16	003881	Screw	24
17	002922	Washer	24
18	002893	Hex Nut	16
19	022562	Screw	4
20	002915	Washer	4

## FLAP

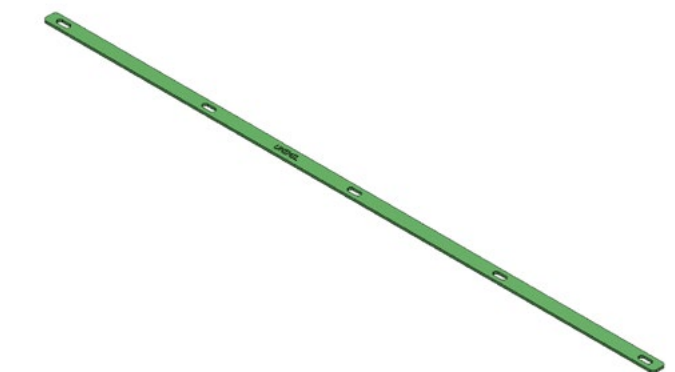


UNIMIL® PN	047019
------------	--------

JOHN DEERE® PN	AXT18928
----------------	----------

APPLICATION: CH950 CH960

## BAR

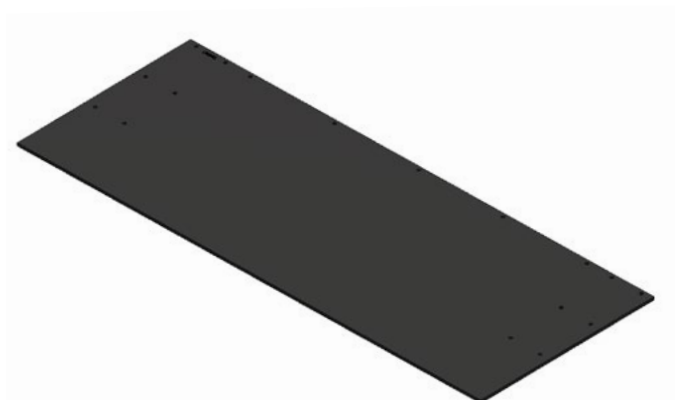


UNIMIL® PN	047524
------------	--------

JOHN DEERE® PN	CXT24662
----------------	----------

APPLICATION: CH950 CH960

## FLAP PAD



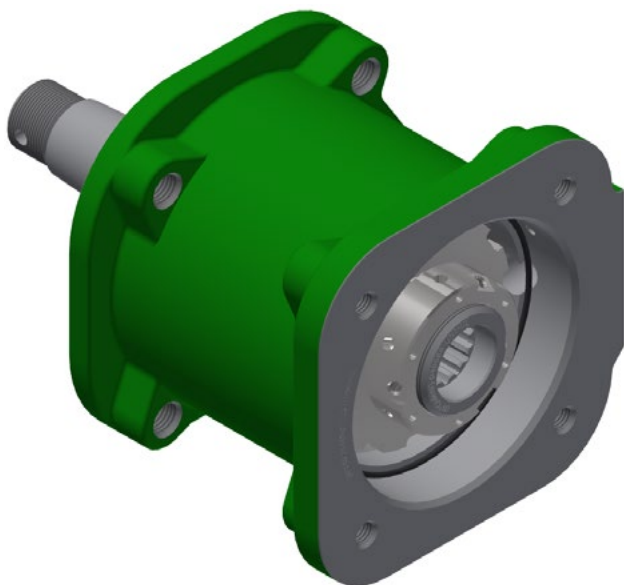
UNIMIL® PN	047020
------------	--------

JOHN DEERE® PN	CXT28452
----------------	----------

APPLICATION: CH950 CH960

- 1600x610mm

## BEARING - PRIMARY EXT

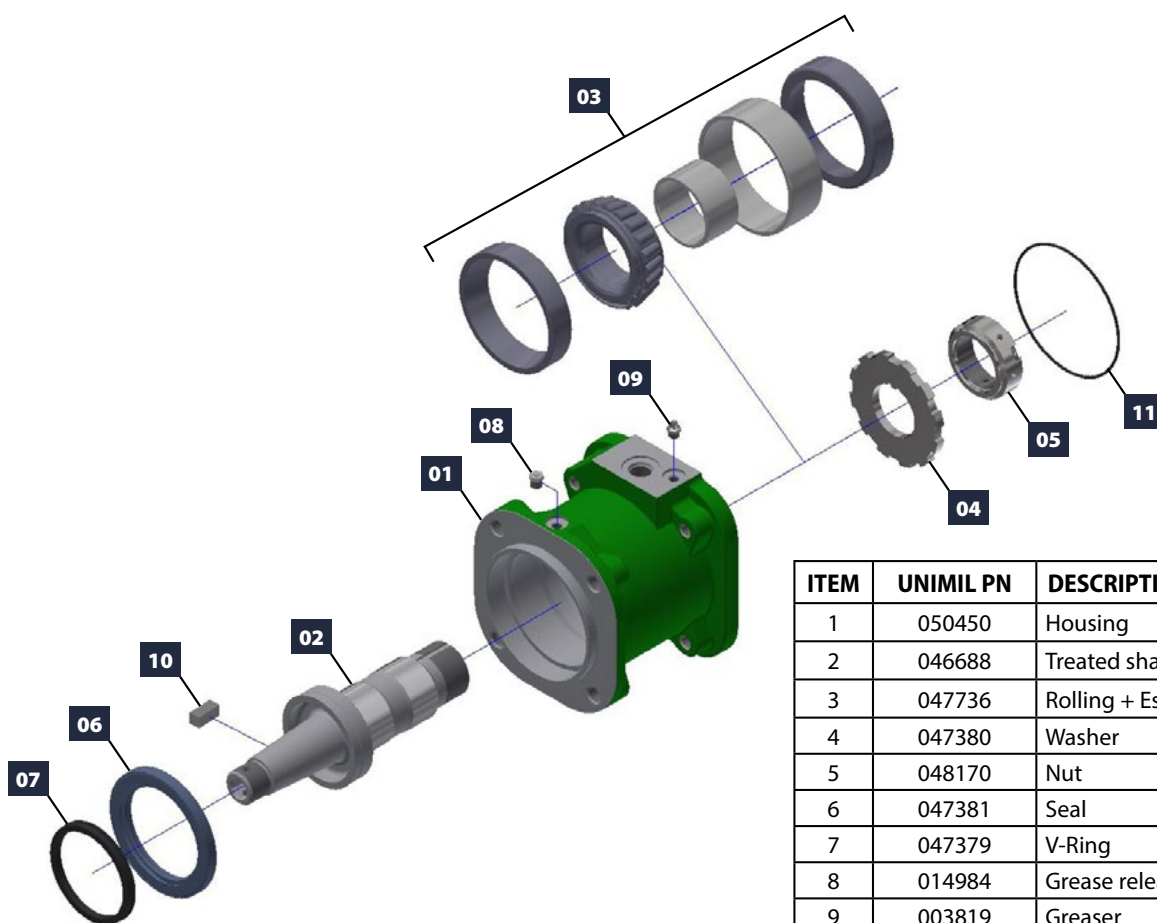


UNIMIL<sup>®</sup> PN 056923

JOHN DEERE<sup>®</sup> PN AXT18884

APPLICATION: CH570 CH670 CH950 CH960

- No adaptation needed
- Original for models from 2021 onwards
- Absorbs vibrations and impacts in the exhaust system
- Prevents possible cracks in the motor housing
- Reduces leaks, preserving the engine
- Motor rotates freely, not affected by the weight of the blade assembly



ITEM	UNIMIL PN	DESCRIPTION	QTDE
1	050450	Housing	1
2	046688	Treated shaft	1
3	047736	Rolling + Espacer	1
4	047380	Washer	1
5	048170	Nut	1
6	047381	Seal	1
7	047379	V-Ring	1
8	014984	Grease release valve	1
9	003819	Greaser	1
10	026761	Key	1
11	033999	O-Ring	1

## EXTRACTOR CHAIN SWIVEL

CHAIN SWIVEL SECONDARY EXTRACTOR 4.26M 2060H

UNIMIL® PN

048011

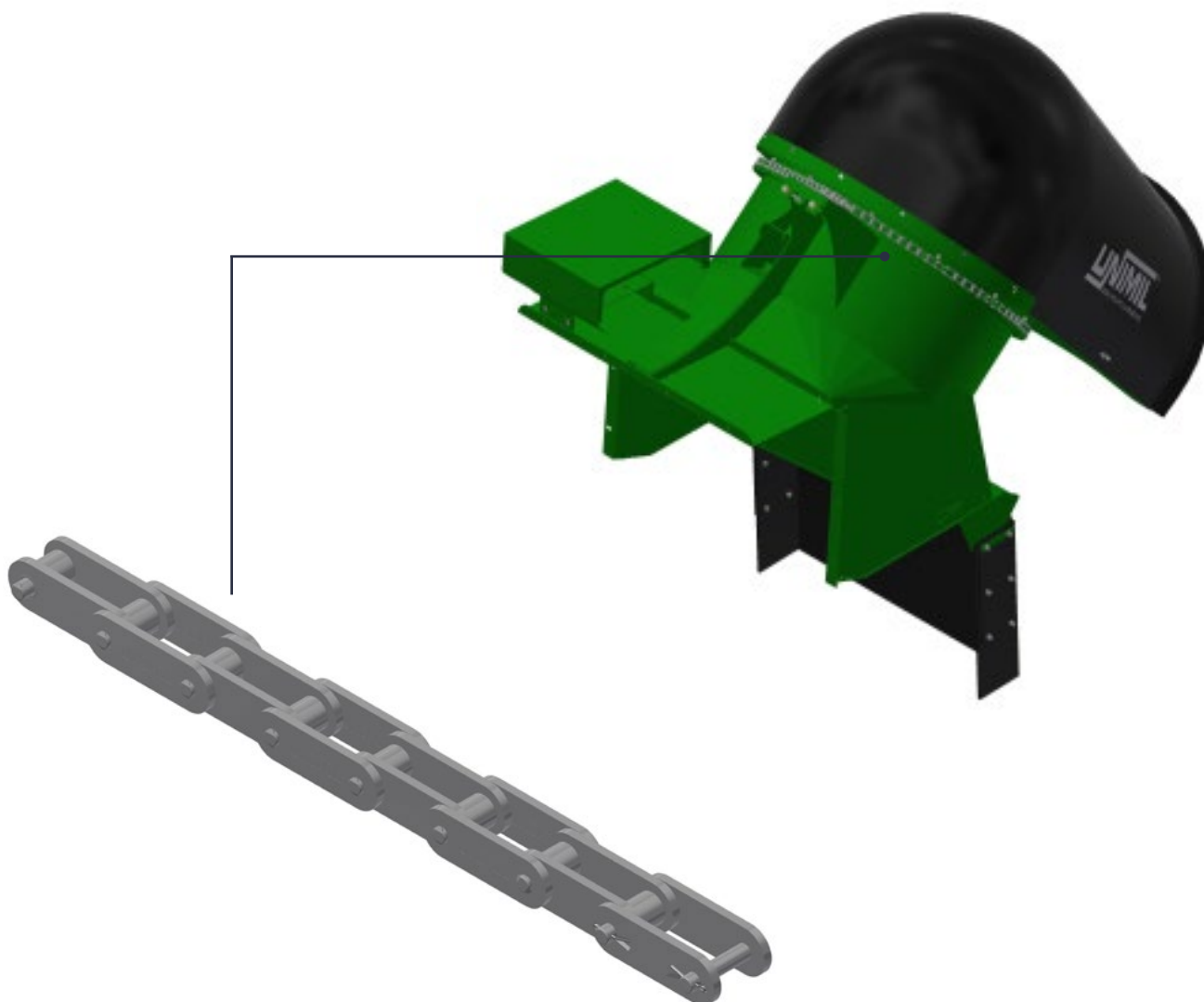
JOHN DEERE® PN

CXT28070

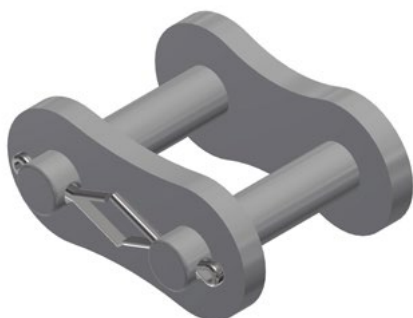
APPLICATION: CH3510 CH3520 CH3522 CH570 CH670 CH950

- High toughness and hardenability compared to the market, ensuring maximum durability
- High resistance to wear, traction and fatigue, offering reliable performance avoiding unwanted stops

### SECONDARY EXTRACTOR



## CHAIN LINK PRIMARY EXTRACTOR - 80H



UNIMIL® PN

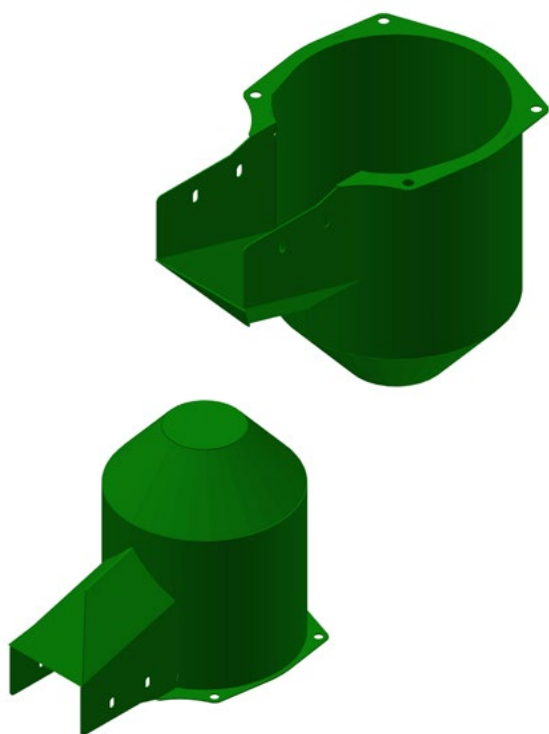
050458

JOHN DEERE® PN

SW80COUS

APPLICATION: CH3510 CH3520 CH3522 CH570 CH670 CH950

## MOTOR PROTECCION



UNIMIL® PN

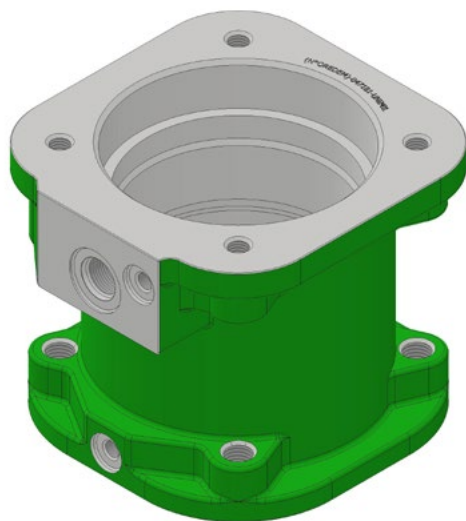
046713

JOHN DEERE® PN

AXT18858

APPLICATION: CH950 CH960

## HOUSING



UNIMIL® PN	050450
------------	--------

JOHN DEERE® PN	CXT21311
----------------	----------

APPLICATION: CH950 CH960

## ARM



UNIMIL® PN	047046
------------	--------

JOHN DEERE® PN	AXT19028
----------------	----------

APPLICATION: CH950 CH960

## SECONDARY EXT RING



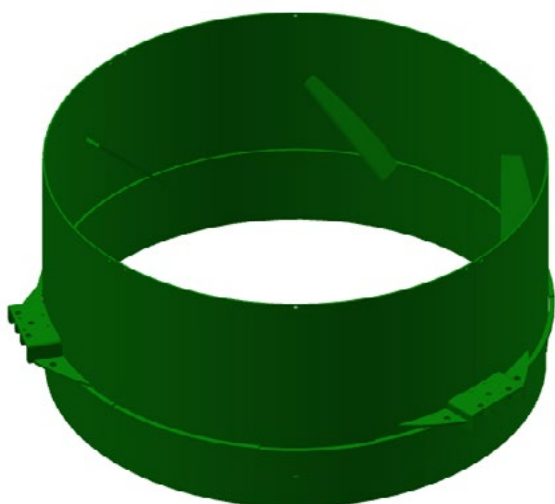
UNIMIL <sup>®</sup> PN	051706
------------------------	--------

JOHN DEERE <sup>®</sup> PN	CXT27754
----------------------------	----------

APPLICATION: CH950 CH960

- Hardox 450 - Esp. 3mm

## RAW WELDMENT



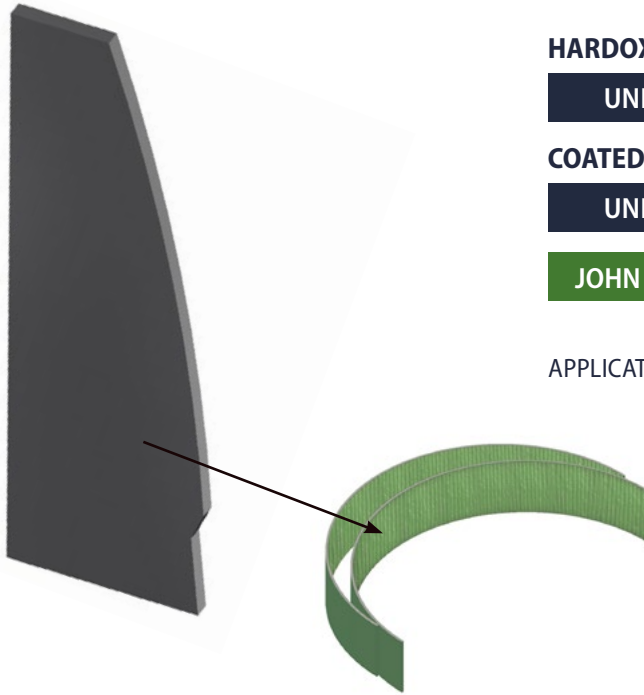
UNIMIL <sup>®</sup> PN	047898
------------------------	--------

JOHN DEERE <sup>®</sup> PN	AXT18495
----------------------------	----------

APPLICATION: CH950 CH960



## DEFLECTOR



### HARDOX 450 10MM

UNIMIL® PN	033669
------------	--------

### COATED PLATE 6+4MM

UNIMIL® PN	045220
------------	--------

JOHN DEERE® PN	CB01422414
----------------	------------

APPLICATION: CH3510 CH3520 CH2522 CH570 CH670 CH950 CH960

## GEAR



UNIMIL® PN	025581
------------	--------

JOHN DEERE® PN	0221349755, AXT13039, CXT13076
----------------	--------------------------------

APPLICATION: CH3510 CH3520 CH3522 CH570 CH670 CH950 CH960

- Reduced maintenance and less equipment downtime
- Char-Lynn engine standardization
- Greater durability of the kit (gear, axle and motor)
- Substitutes the original motor (Key) for the Charlynn motor (Chiselled) 18,7 - 24,0 - 30,0 CID

## SWINGED CARVED GEAR - SECONDARY EXTRACTOR



UNIMIL® PN	028905
------------	--------

JOHN DEERE® PN	0220286626
----------------	------------

APPLICATION: CH3510 CH3520 CH3522 CH570 CH670 CH950 CH960

- Internally carved instead of keyway

## RING COATING



UNIMIL® PN	020884
------------	--------

JOHN DEERE® PN	CXT32052
----------------	----------

APPLICATION: CH570 CH670 CH950 CH960

- Hardox 450 - Esp. 6mm

## PRIMARY EXT FAN BLADE

### KIT 4 PCS

- DIGITAL AND AUTOMATIC WEIGHING SYSTEM: it selects fan blades with a difference of up to 5g within the same group
- CHEMICAL ANALYSIS FOR MATERIAL CONTROL: it certifies steel quality and legitimacy
- THREE-DIMENSIONAL MEASURING: which highly guarantees technical specifications

APPLICATION: CH570 CH670 CH950 CH960



#### MAT. 1045 - UNCOATED

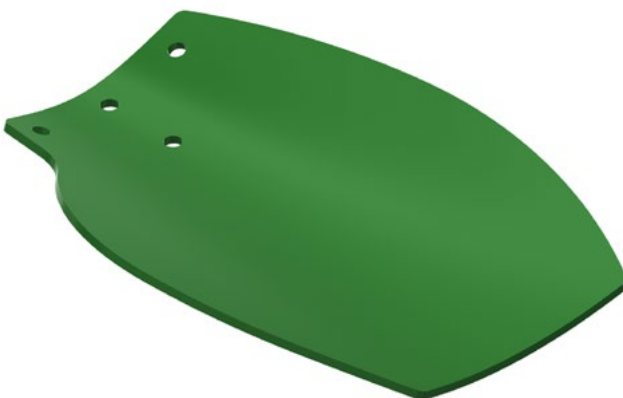
UNIMIL® PN	033712
------------	--------

JOHN DEERE® PN	AXT16378
----------------	----------

#### MAT. 1020 - UNCOATED

UNIMIL® PN	038543
------------	--------

JOHN DEERE® PN	AXT16378
----------------	----------



#### MAT. 1045 - UNCOATED (PAINTED)

UNIMIL® PN	050389
------------	--------

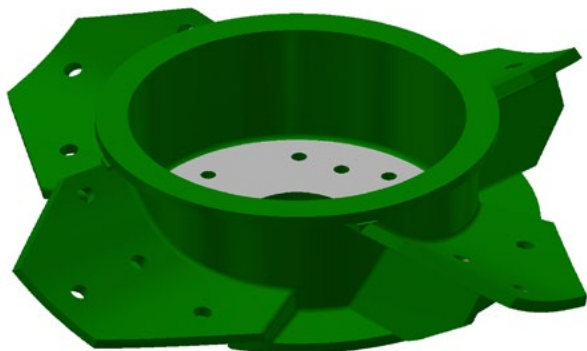
JOHN DEERE® PN	AXT16378
----------------	----------

#### MAT. 1020 - COATED (PAINTED)

UNIMIL® PN	030562
------------	--------

JOHN DEERE® PN	AXT16378
----------------	----------

## PRIMARY EXTRACTOR FAN



UNIMIL® PN	030913
------------	--------

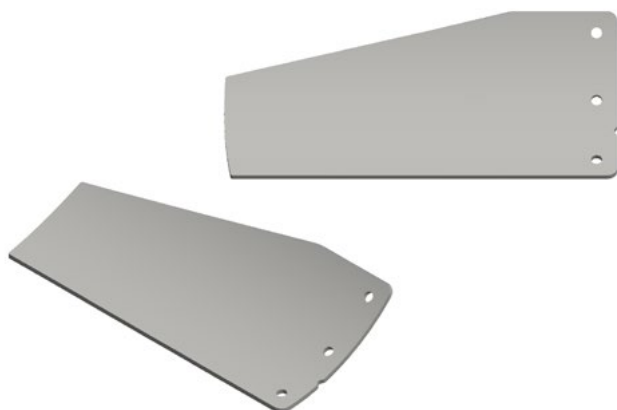
JOHN DEERE® PN	AXT15253
----------------	----------

APPLICATION: CH3510 CH3520 CH3522 CH570 CH670 CH950 CH960

- Welded steel hub
- Coating applied to wear locations
- Balancing according to ISO standard

## SECONDARY EXT BLADE

KIT 3 PCS



UNIMIL® PN	047182
------------	--------

JOHN DEERE® PN	AXT15860
----------------	----------

APPLICATION: CH950 CH960

## WEAR PLATE

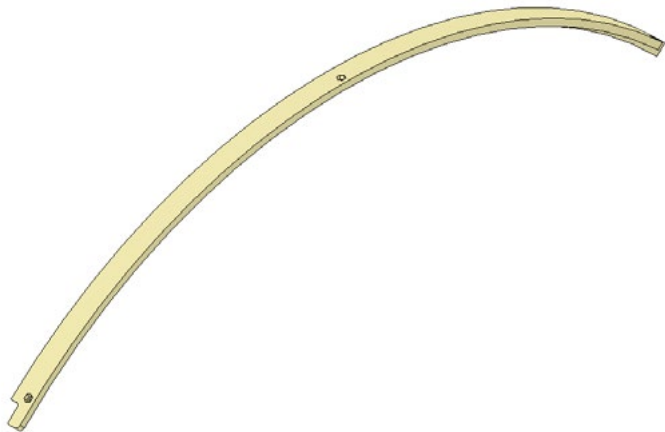


UNIMIL <sup>®</sup> PN	048117
------------------------	--------

JOHN DEERE <sup>®</sup> PN	CXT30123
----------------------------	----------

APPLICATION: CH950 CH960

## SEAL PLATE



UNIMIL <sup>®</sup> PN	048436
------------------------	--------

JOHN DEERE <sup>®</sup> PN	CXT30561
----------------------------	----------

APPLICATION: CH950 CH960

## VENETIAN + SPECIAL UNIMIL SUPPORT

UNIMIL<sup>®</sup> PN

056790

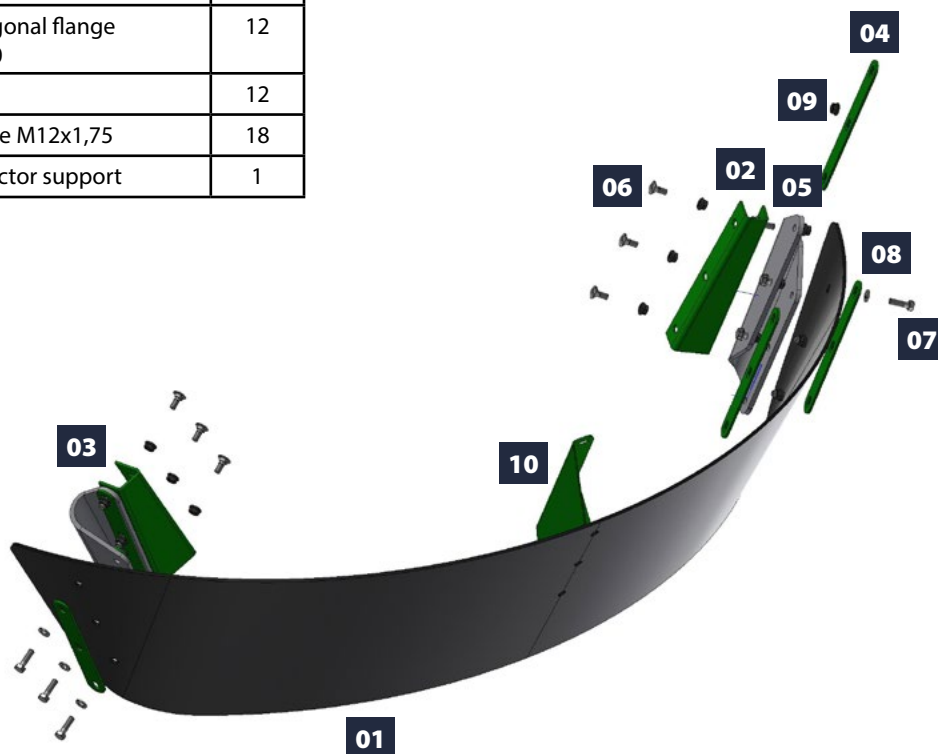
JOHN DEERE<sup>®</sup> PN

CXT31214

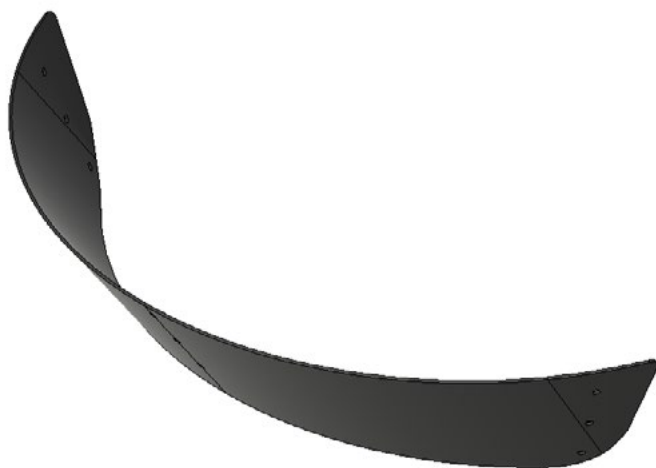
APPLICATION: CH950 CH960

- UHMW - Esp. 10mm
- Increase in the protection area of the extractor, reducing the loss of cane turrets
- Prevents machine stop in the field due to wear
- Produced with high strength material, increasing system durability

ITEM	UNIMIL PN	DESCRIPTION	QTDE
1	058273	DefleCtor	1
2	057026	Deflector plate RH	1
3	057031	Deflector plate LH	1
4	011261	Fixing plate	6
5	030168	Rear support puller	2
6	005713	French screw M12x1,75x30	6
7	002869	Bolting hexagonal flange M12X1,75X40	12
8	003592	Washer	12
9	009915	Hex nut flange M12x1,75	18
10	048115	Primary deflector support	1



## DEFLECTOR

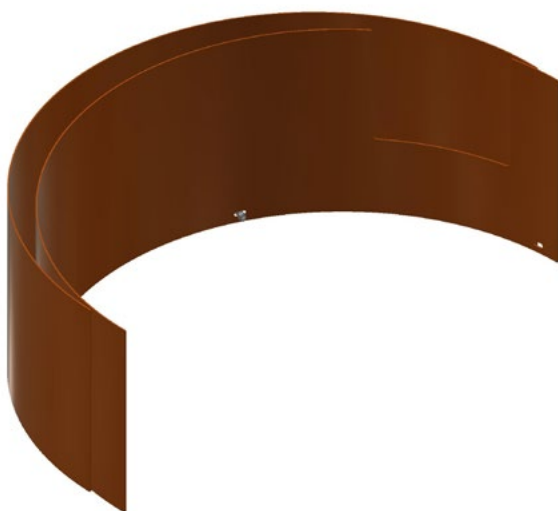


UNIMIL <sup>®</sup> PN	048370
------------------------	--------

JOHN DEERE <sup>®</sup> PN	CXT31214
----------------------------	----------

APPLICATION: CH950 CH960

## SECONDARY EXTRACTOR HIGH RING



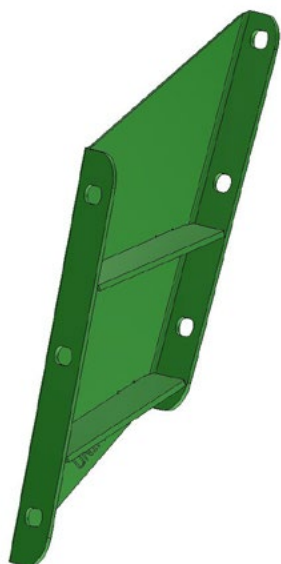
UNIMIL <sup>®</sup> PN	059730
------------------------	--------

JOHN DEERE <sup>®</sup> PN	CXT27754
----------------------------	----------

APPLICATION: CH950 CH960

- Hardox 450 material
- Larger area of protection for the secondary extractor
- Preserves the extractor structure

## DEFLECTOR SUPPORT

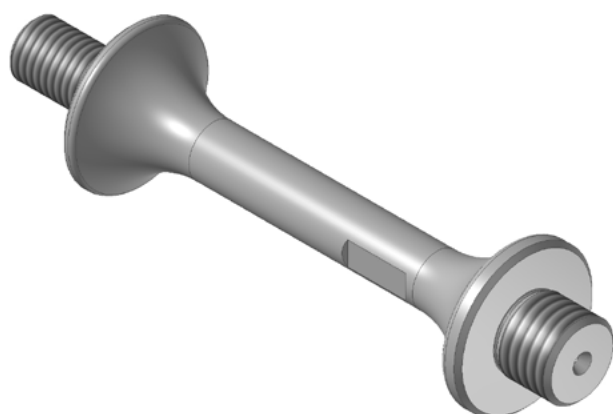


UNIMIL® PN	048115
------------	--------

JOHN DEERE® PN	AXT17263
----------------	----------

APPLICATION: CH950 CH960

## ROD



UNIMIL® PN	056233
------------	--------

JOHN DEERE® PN	CXT22405
----------------	----------

APPLICATION: CH3520 CH3522 CH570 CH670 CH950 CH960

- Surface Treatment of Zinc Plating



## FLANGE

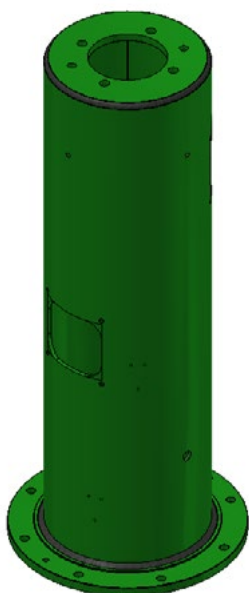


UNIMIL® PN	030865
------------	--------

JOHN DEERE® PN	AXT16612
----------------	----------

APPLICATION: CH950 CH960

## TUBE

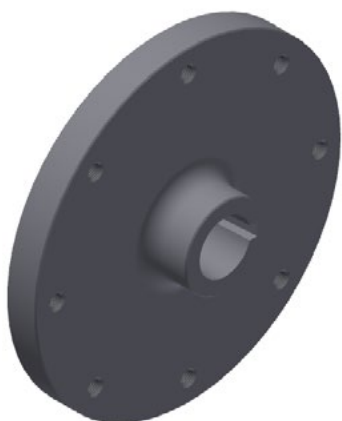


UNIMIL® PN	048116
------------	--------

JOHN DEERE® PN	AXT16609
----------------	----------

APPLICATION: CH950 CH960

## SUPERIOR HUB



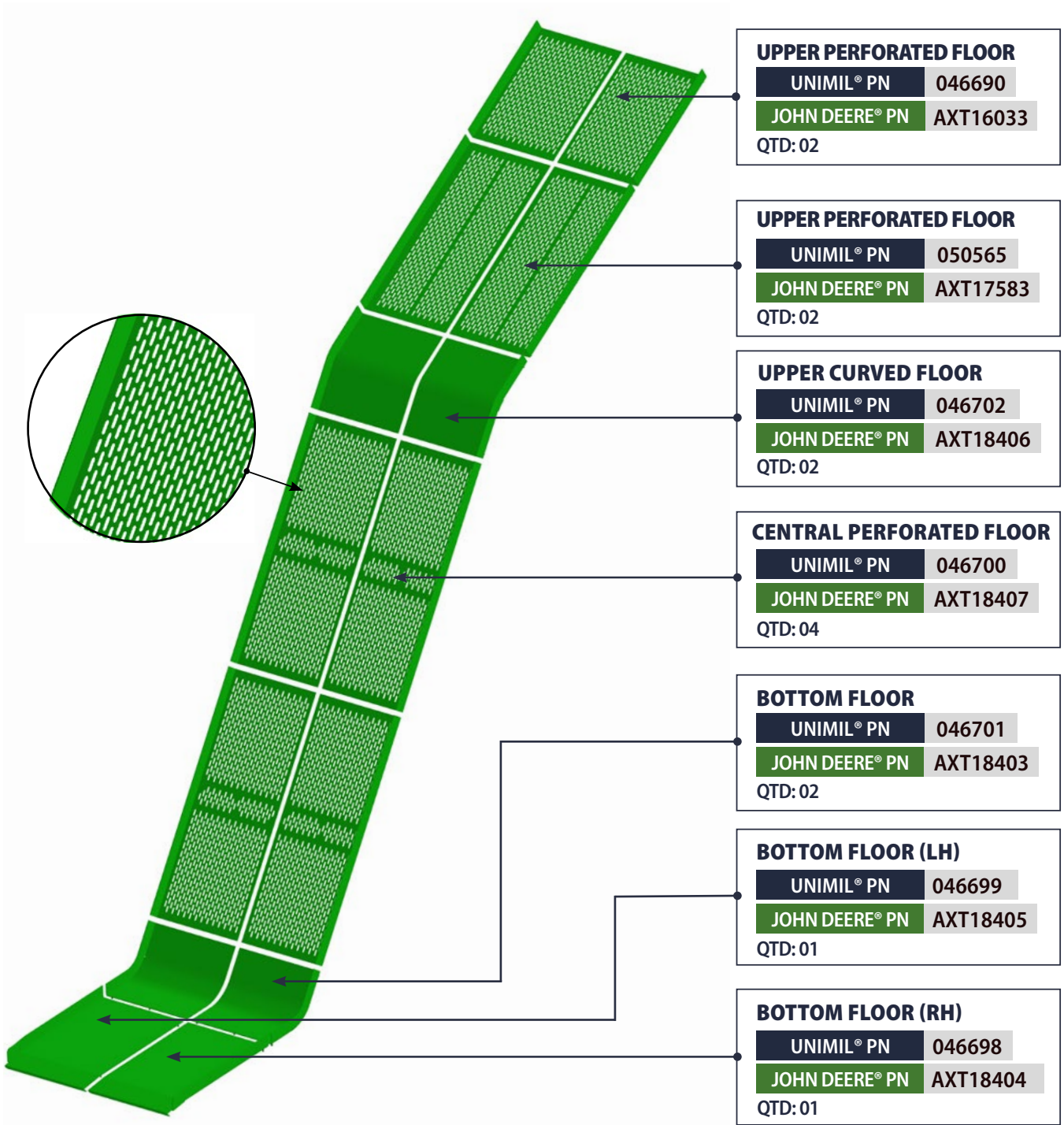
UNIMIL® PN	004224
------------	--------

JOHN DEERE® PN	CB01390882
----------------	------------

APPLICATION: CH950 CH960

# ELEVATOR

## PERFORATED FLOOR - CONVENTIONAL



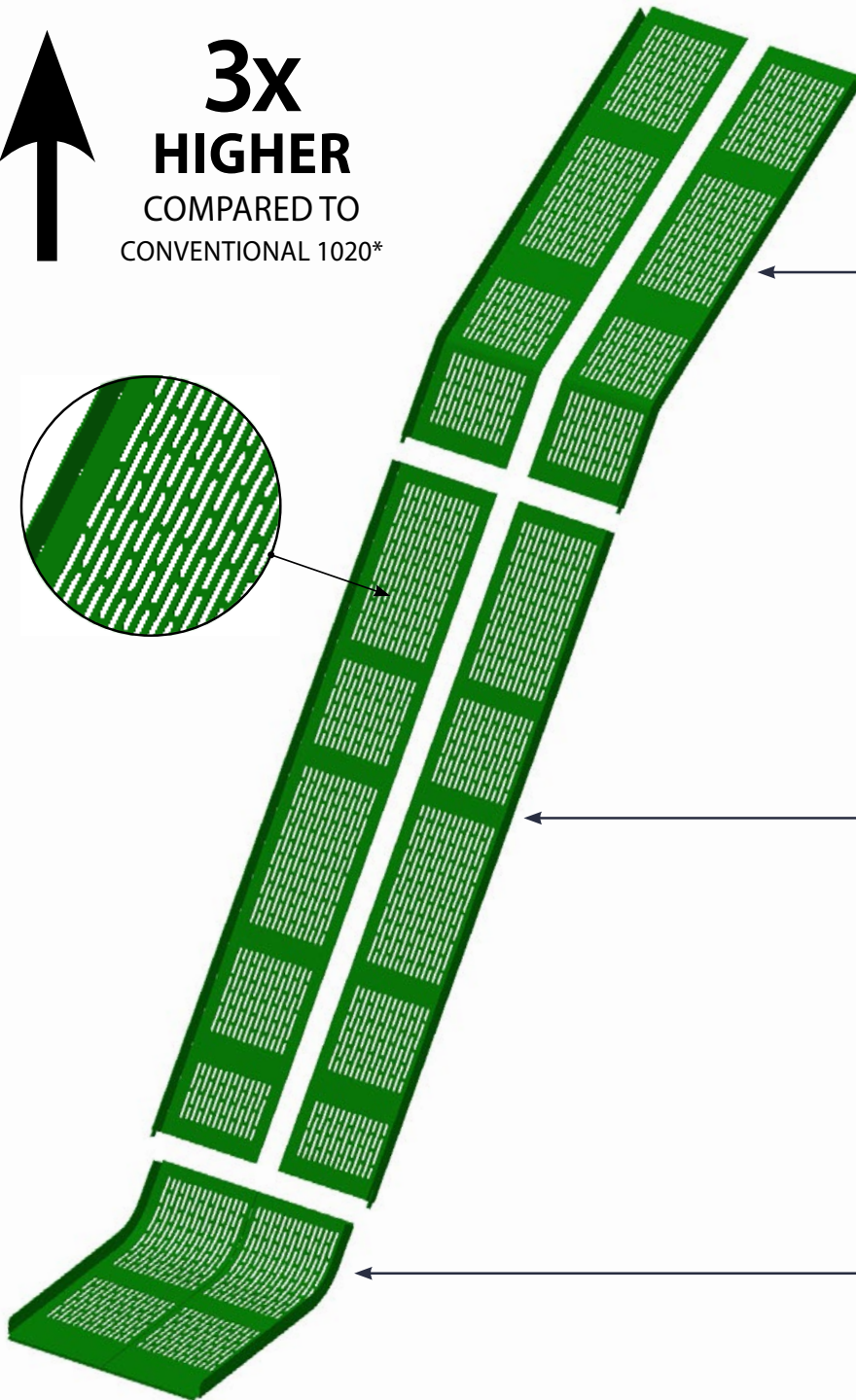
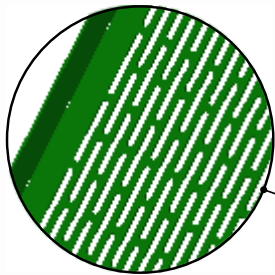
APPLICATION: CH950 CH960

• Mat. SAE1020 - Esp. 3/16"

## PERFORATED FLOOR - HARDOX 450 6MM



**3x  
HIGHER**  
COMPARED TO  
CONVENTIONAL 1020\*



### UPPER (RH) EXT 24" 6MM

UNIMIL® PN 038010

JOHN DEERE® PN CB11473168

### UPPER (LH) EXT 24" 6MM

UNIMIL® PN 038011

JOHN DEERE® PN CB11473169

### MIDDLE (RH) 6MM

UNIMIL® PN 038006

JOHN DEERE® PN CB11472871

### MIDDLE (LH) 6MM

UNIMIL® PN 038005

JOHN DEERE® PN CB11472870

### PERF. BOTTOM (RH+LH) 6MM

UNIMIL® PN 038004

JOHN DEERE® PN CB11472869

APPLICATION: CH3510 CH3520 CH3522 CH570 CH670

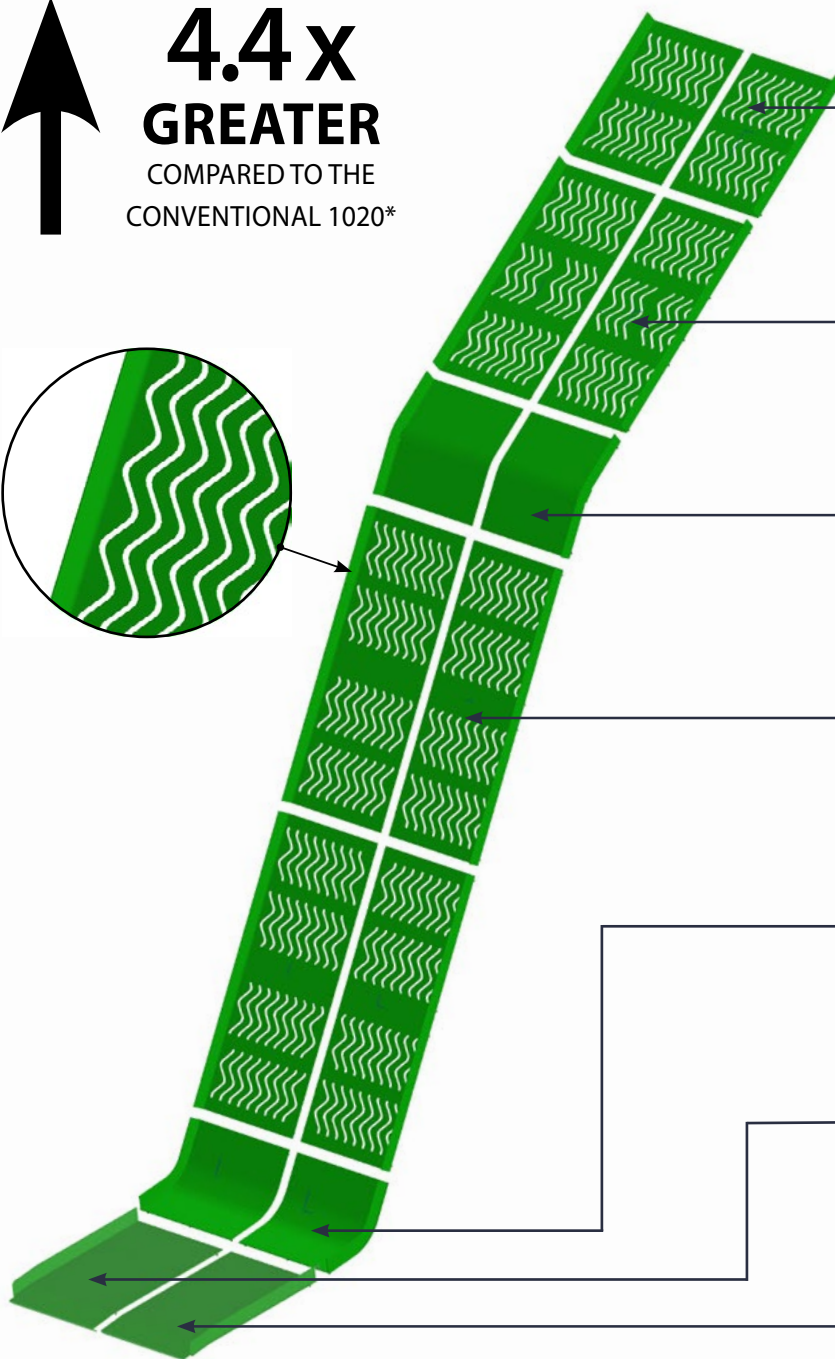
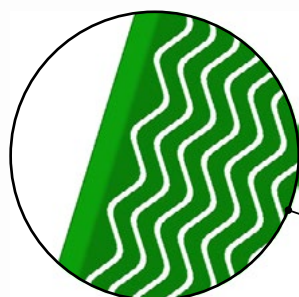
• Hardox 450: 3x better wear resistance compared to conventional 1020\*

\* Laboratory test

## SINUOUS FLOOR- HIGH PERFORMANCE



**4.4x  
GREATER**  
COMPARED TO THE  
CONVENTIONAL 1020\*



<b>UPPER SINUOUS 3MM</b>	UNIMIL® PN 058033	JOHN DEERE® PN AXT16033	QTD: 02
<b>UPPER SINUOUS 3MM</b>	UNIMIL® PN 058032	JOHN DEERE® PN AXT17583	QTD: 02
<b>UPPER CURVED 3MM</b>	UNIMIL® PN 058031	JOHN DEERE® PN AXT18406	QTD: 02
<b>CENTRAL SINUOUS 3MM</b>	UNIMIL® PN 058030	JOHN DEERE® PN AXT18407	QTD: 04
<b>BOTTOM CURVED 5MM</b>	UNIMIL® PN 058029	JOHN DEERE® PN AXT18403	QTD: 02
<b>BOTTOM FLAT (LH) 5MM</b>	UNIMIL® PN 058028	JOHN DEERE® PN AXT18405	QTD: 01
<b>BOTTOM FLAT (RH) 5MM</b>	UNIMIL® PN 058027	JOHN DEERE® PN AXT18404	QTD: 01

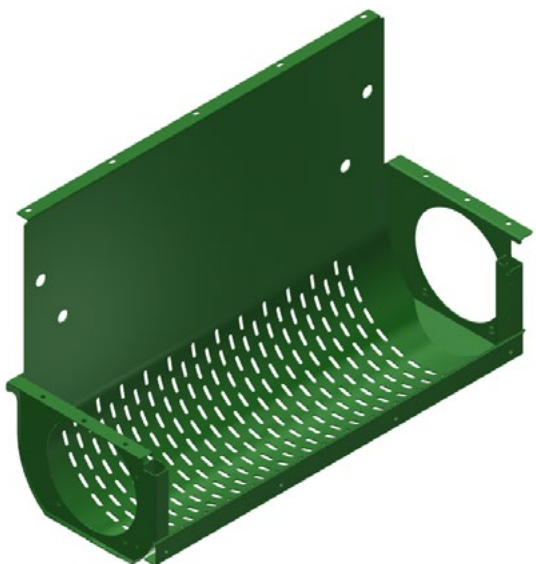
APPLICATION: CH950

- High performance material, 4,4x greater in endurance to wearing compared to the conventional 1020\*
- Less thickness, providing weight reduction for the elevator
- Enhances the cleaning of the transported sugar cane, reducing mineral impurities
- Floors with sinuous format in opposition to the traditional long border

\*Laboratory test



## PLATE J



UNIMIL® PN

047386

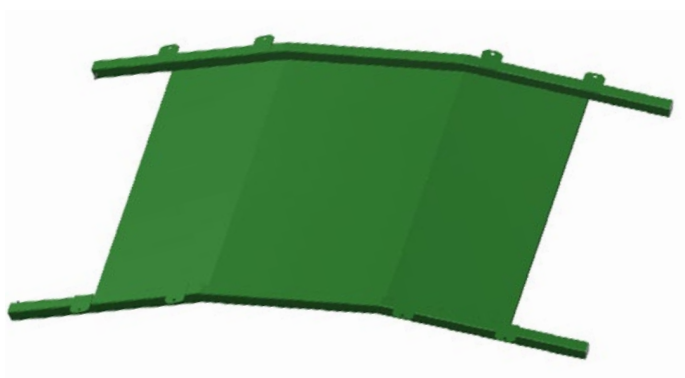
JOHN DEERE® PN

AXT18202

APPLICATION: CH950 CH960

- Reduces mineral impurities at the bottom of the lift

## ELEVATOR PROTECTION



UNIMIL® PN

047526

JOHN DEERE® PN

AXT18295

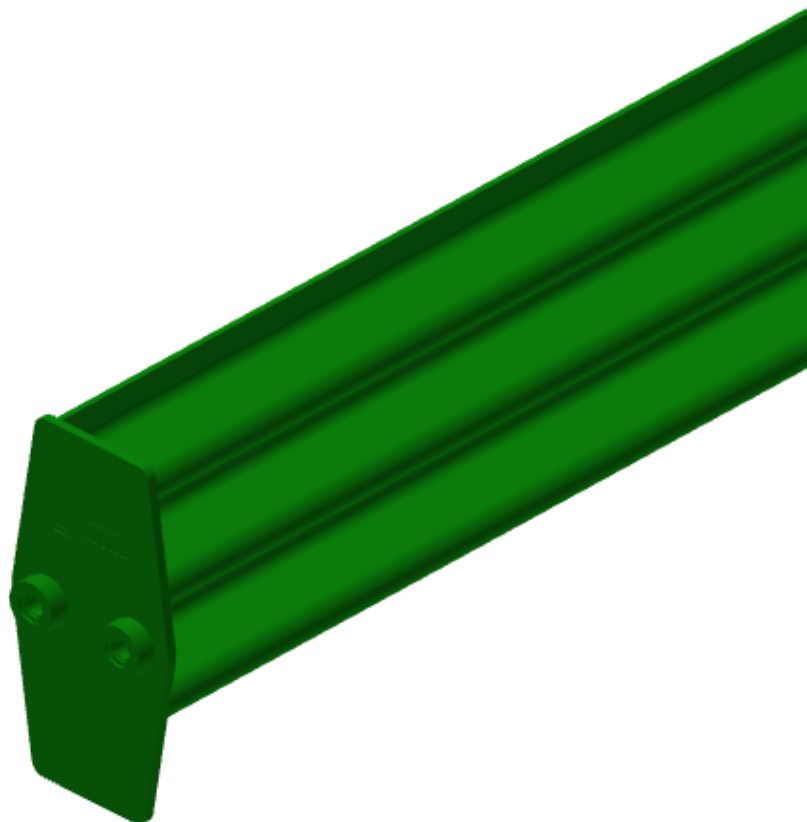
APPLICATION: CH950 CH960

## SLAT - 03 BEND

UNIMIL® PN	047044
------------	--------

JOHN DEERE® PN	AXT18505
----------------	----------

APPLICATION: CH950 CH960



## CHAIN LINK

UNIMIL® PN	026686
------------	--------

JOHN DEERE® PN	CB11407067
----------------	------------

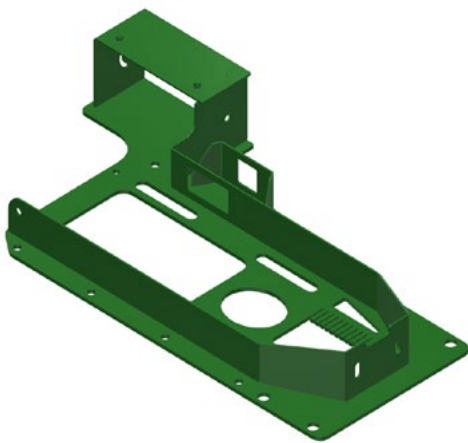
APPLICATION: CH3510 CH3520 CH3522 CH570 CH670 CH950 CH960

- Nut parlock (locking) instead of pin lock
- Increased security and resistance



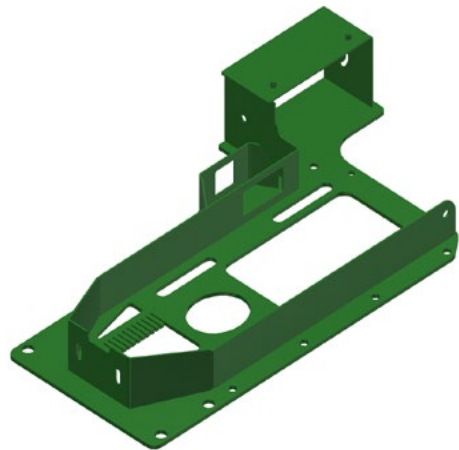
# STRETCHER

APPLICATION: CH950 CH960



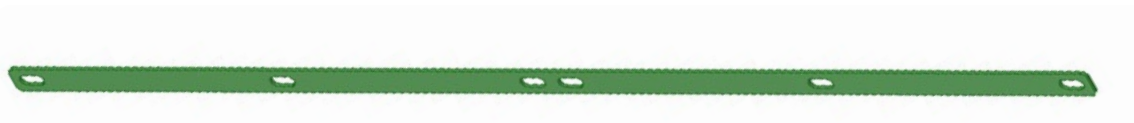
**BASE (LH)**

UNIMIL® PN	051573
JOHN DEERE® PN	AXT20179



**BASE (RH)**

UNIMIL® PN	051572
JOHN DEERE® PN	AXT20178



**FIX PLATE**

UNIMIL® PN	047531
JOHN DEERE® PN	CXT29919

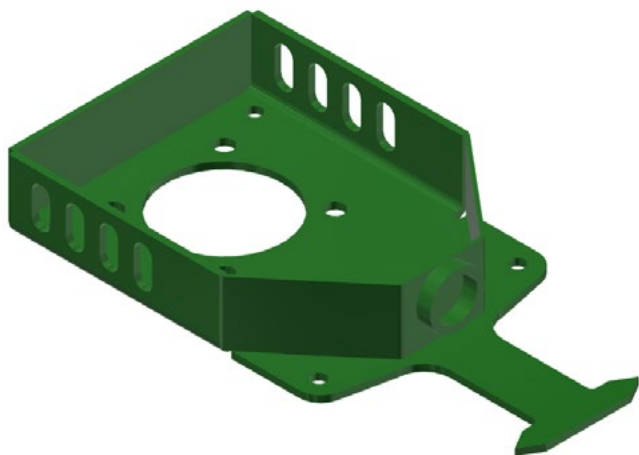


**SPACER**

UNIMIL® PN	047742
JOHN DEERE® PN	CXT28066



## ELEVATOR SUPPORT

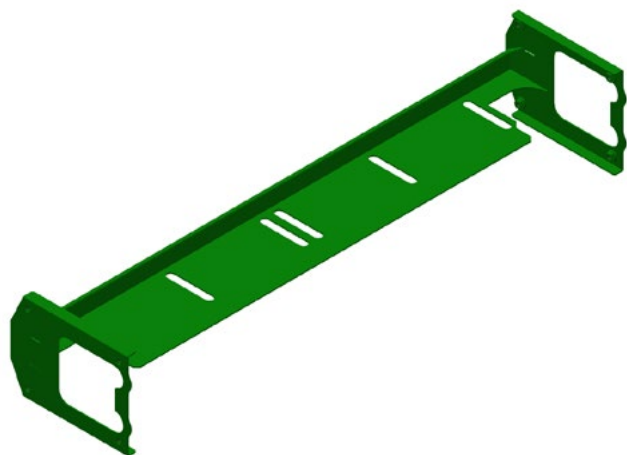


UNIMIL® PN	047745
------------	--------

JOHN DEERE® PN	AXT17212
----------------	----------

APPLICATION: CH950 CH960

## SUPPORT



UNIMIL® PN	051575
------------	--------

JOHN DEERE® PN	AXT17981
----------------	----------

APPLICATION: CH950 CH960

## ELEVATOR SPROCKET

APPLICATION: CH950 CH960



11Z

UNIMIL® PN	048797
------------	--------

JOHN DEERE® PN	CXT21665
----------------	----------

- Heat treatment



15Z - INTERMEDIARY

UNIMIL® PN	048796
------------	--------

JOHN DEERE® PN	CXT25412
----------------	----------

- Heat treatment



17Z

UNIMIL® PN	048384
------------	--------

JOHN DEERE® PN	CXT29766
----------------	----------

- Heat treatment

HUB

UNIMIL® PN	046708
------------	--------

JOHN DEERE® PN	CXT29703
----------------	----------

## SPROCKET SUPPORT

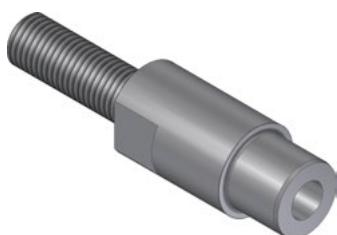


UNIMIL® PN	047743
------------	--------

JOHN DEERE® PN	AXT19023
----------------	----------

APPLICATION: CH950 CH960

## SHAFT - GEAR



UNIMIL® PN	046710
------------	--------

JOHN DEERE® PN	CXT31631
----------------	----------

APPLICATION: CH950 CH960

## SHAFT SUPPORT



UNIMIL® PN	051574
------------	--------

JOHN DEERE® PN	AXT20202
----------------	----------

APPLICATION: CH950 CH960

## BOTTOM SHAFT



UNIMIL <sup>®</sup> PN	046709
------------------------	--------

JOHN DEERE <sup>®</sup> PN	AXT18060
----------------------------	----------

APPLICATION: CH950 CH960

## SPACER



UNIMIL <sup>®</sup> PN	056369
------------------------	--------

JOHN DEERE <sup>®</sup> PN	CXT33856
----------------------------	----------

APPLICATION: CH950 CH960

# SWIVEL LIFT

## CENTER SHAVE



UNIMIL® PN	051280
------------	--------

JOHN DEERE® PN	CXT30949
----------------	----------

APPLICATION: CH950 CH960

- Sheave in treated cast iron
- Increased strength and durability
- Uses center bearing to reduce friction

## CENTER GUIDE CABLE SWIVEL C/ BUSHING BRONZE



UNIMIL® PN	051279
------------	--------

JOHN DEERE® PN	CXT30949
----------------	----------

APPLICATION: CH950 CH960

- Sheave in treated cast iron
- Increased strength and durability

## CENTER SHAVE

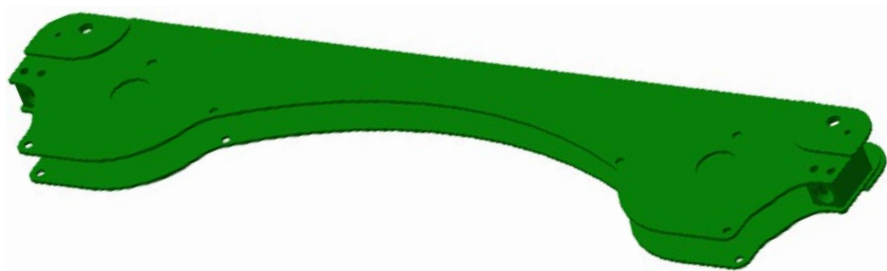


UNIMIL® PN 047038

JOHN DEERE® PN CXT30949

APPLICATION: CH950 CH960

## ELEVATOR STRUCTURE



UNIMIL® PN 048173

JOHN DEERE® PN AXT18808

APPLICATION: CH950 CH960



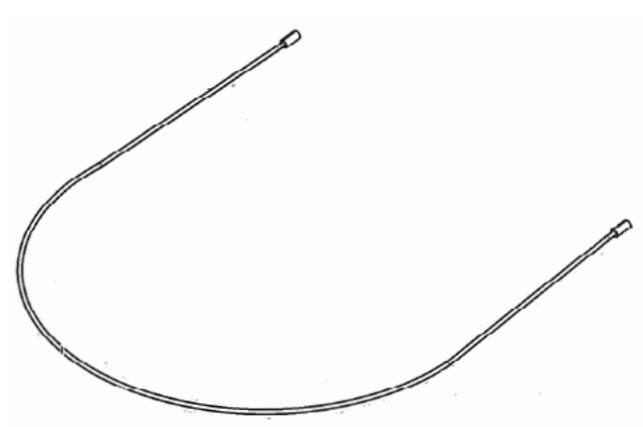
## JOINT BRACKET

UNIMIL® PN 008414

JOHN DEERE® PN CXT26361

APPLICATION: CH570 CH670 CH950 CH960

## CABLE STEEL SWIVEL - SAFETY



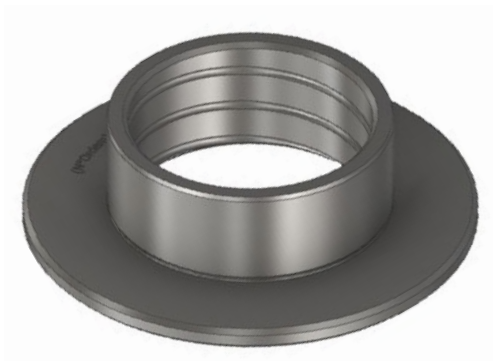
UNIMIL® PN	046694
------------	--------

JOHN DEERE® PN	CXT30955
----------------	----------

APPLICATION: CH950 CH960

---

## SWING TABLE CENTRAL BUSHING



UNIMIL® PN	047043
------------	--------

JOHN DEERE® PN	CXT27131
----------------	----------

APPLICATION: CH950 CH960



## HOUSING

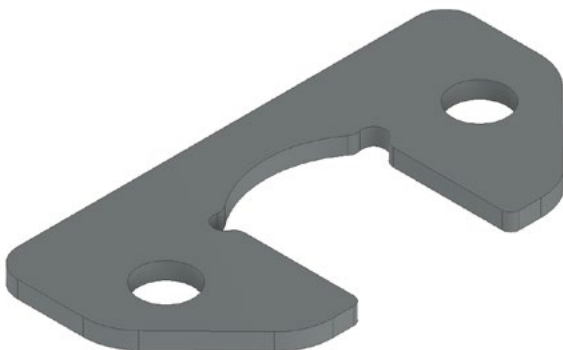


UNIMIL® PN	047527
------------	--------

JOHN DEERE® PN	CXT27132
----------------	----------

APPLICATION: CH950 CH960

## FIX PLATE

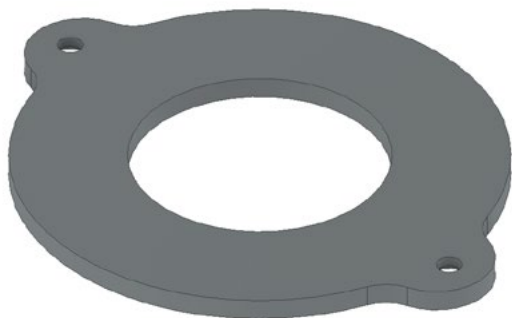


UNIMIL® PN	047041
------------	--------

JOHN DEERE® PN	CXT31036
----------------	----------

APPLICATION: CH950 CH960

## WEAR PLATE



UNIMIL® PN	047042
------------	--------

JOHN DEERE® PN	CXT31113
----------------	----------

APPLICATION: CH950

---

## CENTRAL PIN SWIVEL TABLE - WITH LUBRICATION CHANNEL



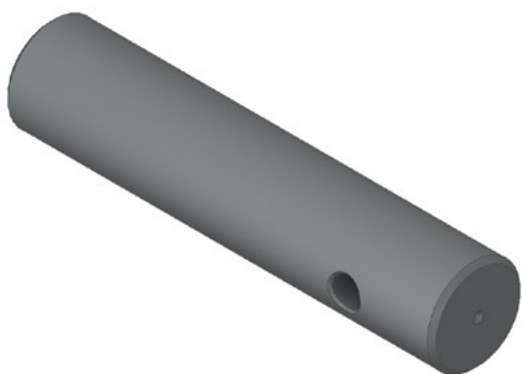
UNIMIL® PN	057971
------------	--------

JOHN DEERE® PN	CXT31100
----------------	----------

APPLICATION: CH950 CH960

- Reduction of wear of the swivel table pin and bushing

## BOTTOM PIN - TABLE SWIVEL



UNIMIL® PN	046703
------------	--------

JOHN DEERE® PN	CXT30184
----------------	----------

APPLICATION: CH950 CH960

## SWING TABLE PIN



UNIMIL® PN	046704
------------	--------

JOHN DEERE® PN	CXT21461
----------------	----------

APPLICATION: CH950 CH960

## PIN PIVOTING PULLEY



UNIMIL<sup>®</sup> PN

046692

JOHN DEERE<sup>®</sup> PN

AXT17083

APPLICATION: CH950 CH960

# HYDRAULIC

## HYDRAULIC ACCUMULATOR 1L

**UNIMIL<sup>®</sup> PN****023060****JOHN DEERE<sup>®</sup> PN****CXT10559**

APPLICATION: CH3510 CH3520 CH3522 CH570 CH670 CH950 CH960

- Precharged accumulator
- 28BAR - 400PSI

# VARIOUS

## VARIOUS

PRODUCT	SYSTEM	UNIMIL® PN	JOHN DEERE® PN
CIRCLIP	ELEVATOR ENGINE	008239	CXT22690
PRESSURE RING	ELEVATOR ENGINE	047981	40M7228
O-RING	PRIMARY EXTRACTOR	033999	N203952
SUPPORT NYLON TRUCK/ DIV/ CHASSIS	TRACK	046863	CXT25237
WASHER	OTHERS	034299	24M7456
WASHER CYLINDER HOUSING	ELEVATOR SWIVEL	047391	T164796
ARRUELA EIXO ENGRENAGEM	ELEVATOR	047395	CXT31632
WASHER SHAFT GEAR	ELEVATOR	047394	CXT22132
WASHER	ELEVATOR SWIVEL	047390	CQ15356
WASHER SUPPORT GEAR	ELEVATOR	040404	24M7434
SEALING WASHER	ELEVATOR SWIVEL	056371	CXT33854
CHAIN SWIVEL PRIMARY HOOD	PRIMARY EXTRACTOR	048002	CXT30897
CHOPPER ROLLER DEFLECTOR	CHOPPER	047518	AXT15744
DONALDSON ENGINE OIL FILTER	OTHERS	047848	RE572785
SCREW ALLEN M16	ELEVATOR	047530	L213884
SCREW FIXING DISC M16	BASE CUTTER	048288	19M10392
SCREW FRENCH M10	BASE CUTTER	025687	03M7192
SCREW SEXT FLANGED M12	ELEVATOR	048352	19M9873
SCREW SEXT FLANGED M16	OTHERS	048280	19M7794
SCREW SEXT FLANGED M20	CHOPPER	048299	19M10895
NUT PARLOCK M24	ELEVATOR	048451	14M7413
BEARING	BOX 4 HOLES	047557	YZ250348
BEARING	ELEVATOR	047741	AKK15137
BEARING	TRACK	048568	AXT16182
BEARING	CROP DIVIDER	048342	AKK22197
KNEECAP	TRANSPORTER ROLLER	048579	AT128773
FLAT ROLL STAND	CHOPPER	046997	CXT25276





## Your team RDO Equipment contacts for Unimil parts:

### Bundaberg

Lindsay Potter - 07 4331 8511  
Parts.Bundaberg@rdo.com.au  
19 Enterprise St, Bundaberg QLD 4670

### Mackay

Grant Vaughan - 07 4966 3334  
Parts.Mackay@rdo.com.au  
2276 Bruce Highway, Mackay QLD 4741

### Yatala

Craig Brown - 07 3081 3010  
Parts.Yatala@rdo.com.au  
21 Computer Rd, Yatala QLD 4207

### Lismore

David Buckley - 02 6627 4134  
Parts.Lismore@rdo.com.au  
9 Three Chain Rd, South Lismore NSW 2480

### Maclean

Kathy Glassby - 02 6603 5912  
Parts.Maclean@rdo.com.au  
181 River St, Maclean NSW 2463

### Toowoomba

Corey Colthup - 07 4631 4802  
Parts.Toowoomba@rdo.com.au  
28 Witmack Rd, Wellcamp QLD 4350

### Gympie

Caitlin Williams - 07 5480 6841  
Parts.Gympie@rdo.com.au  
3 Laureceson Rd, Gympie QLD 4570



Scan the barcode to view  
the Ready References to  
identify your parts.



